

Nurse-Family Partnership® is an evidence-based, community health program with over 40 years of evidence showing significant improvements in the health and lives of first-time moms and their children living in poverty.

**6x**  
**\$ RETURN**  
**EVERY \$1 INVESTED IN NFP SAVES \$6.10 IN FUTURE COSTS FOR THE HIGHEST-RISK FAMILIES SERVED<sup>1</sup>**

Nurse-Family Partnership works by having specially trained nurses regularly visit young, first-time moms-to-be, starting early in the pregnancy, continuing through the child's second birthday. Mothers, babies, families and communities all benefit.



### KANSAS MOMS

**23**

Median age at intake

**74%**

Unmarried at intake

**57%**

Clients enrolled in Medicaid at intake

**\$6,000-9,000**

Annual median household income at intake

\*Aggregate data provided by the NSO. Includes state data from 01/01/2019 to 12/31/2021.

### Race

72% White  
18% Black or African American  
2% Asian  
1% American Indian or Alaska Native  
0% Native Hawaiian or Pacific Islander  
6% Multi-racial  
1% Declined

### Ethnicity

32% Hispanic  
68% Non-Hispanic  
0% Declined

\*Aggregate data provided by the NSO. Includes state data from 01/01/2019 to 12/31/2021.

## OUTCOMES FOR KANSAS

\*Aggregate data provided by the NSO. Includes state data from 01/01/2019 to 12/31/2021

\*Babies born at term are those who reached 37 weeks gestation

**88%** BABIES BORN AT TERM

**90%** MOTHERS INITIATED BREASTFEEDING

**100%** BABIES RECEIVED ALL IMMUNIZATIONS BY 24 MONTHS

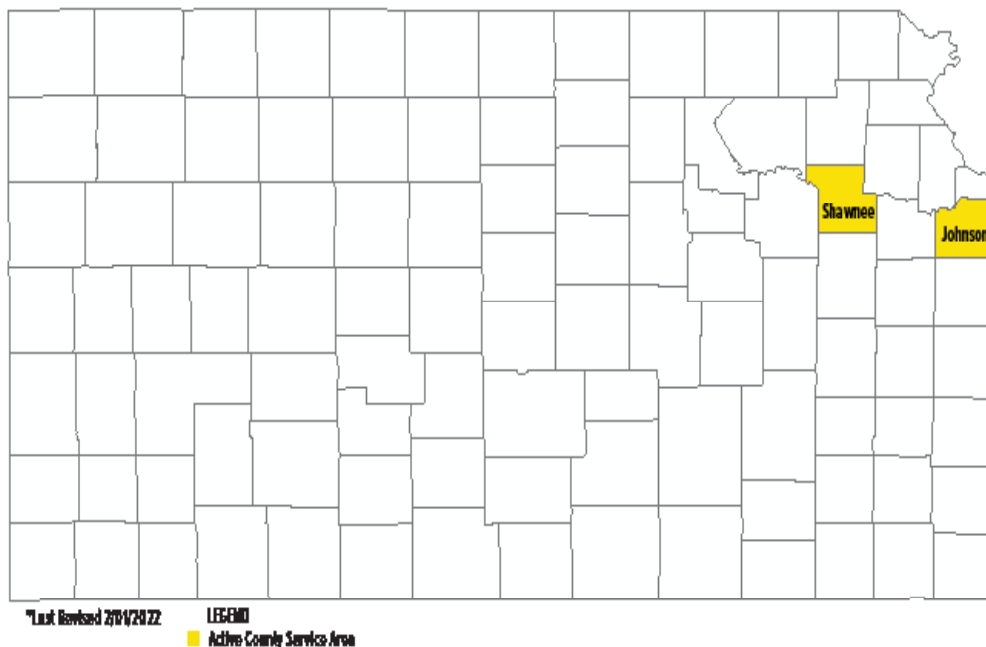
**57%** OF CLIENTS 18+ WERE EMPLOYED AT 24 MONTHS



## Nurse-Family

### Partnership Goals

1. Improve pregnancy outcomes by helping women engage in good preventive health practices.
2. Improve child health and development by helping parents provide responsible and competent care; and
3. Improve the economic self-sufficiency of the family by helping parents develop a vision for their own future.



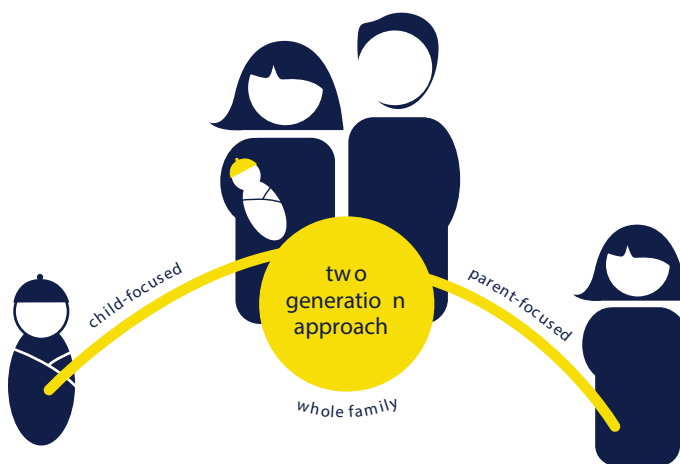
**ESTABLISHED: 2013**

**FAMILIES SERVED  
SINCE 2013: 461**

**CURRENT FUNDED  
CAPACITY: 168**

## NETWORK PARTNERS

- Shawnee County Health Department
- Johnson County Department of Health and Environment



## Better Worlds Start with Great Mothers

Nurse-Family Partnership empowers vulnerable first-time moms to transform their lives and create better futures for themselves and their babies.



Cam Scott

(512) 573-5356

[cam.scott@nursefamilypartnership.org](mailto:cam.scott@nursefamilypartnership.org)