

MARYLAND



Nurse-Family Partnership® is an evidence-based, community health program with over 40 years of evidence showing significant improvements in the health and lives of first-time moms and their children living in poverty.

6x \$ RETURN

EVERY \$1 INVESTED IN NFP SAVES \$6.60 IN FUTURE COSTS FOR THE HIGHEST-RISK FAMILIES SERVED¹

Nurse-Family Partnership works by having specially trained nurses regularly visit young, first-time moms-to-be, starting early in the pregnancy, continuing through the child's second birthday. Mothers, babies, families and communities all benefit.



MARYLAND MOMS

20
Median age at intake

90%
Unmarried at intake

71%
Clients enrolled in Medicaid at intake

Less than or equal to \$6,000
Annual median household income at intake

*Aggregate data provided by the NSO. Includes state data from 01/01/2019 to 12/31/2021.

Race
9% White
79% Black or African American
0% Asian
1% American Indian or Alaska Native
0% Native Hawaiian or Pacific Islander
1% Multi-racial
6% Declined

Ethnicity
15% Hispanic
78% Non-Hispanic
4% Declined

*Aggregate data provided by the NSO. Includes state data from 01/01/2019 to 12/31/2021.

OUTCOMES FOR MARYLAND

*Aggregate data provided by the NSO. Includes state data from 01/01/2019 to 12/31/2021

*Babies born at term are those who reached 37 weeks gestation

82% BABIES BORN AT TERM

73% MOTHERS INITIATED BREASTFEEDING

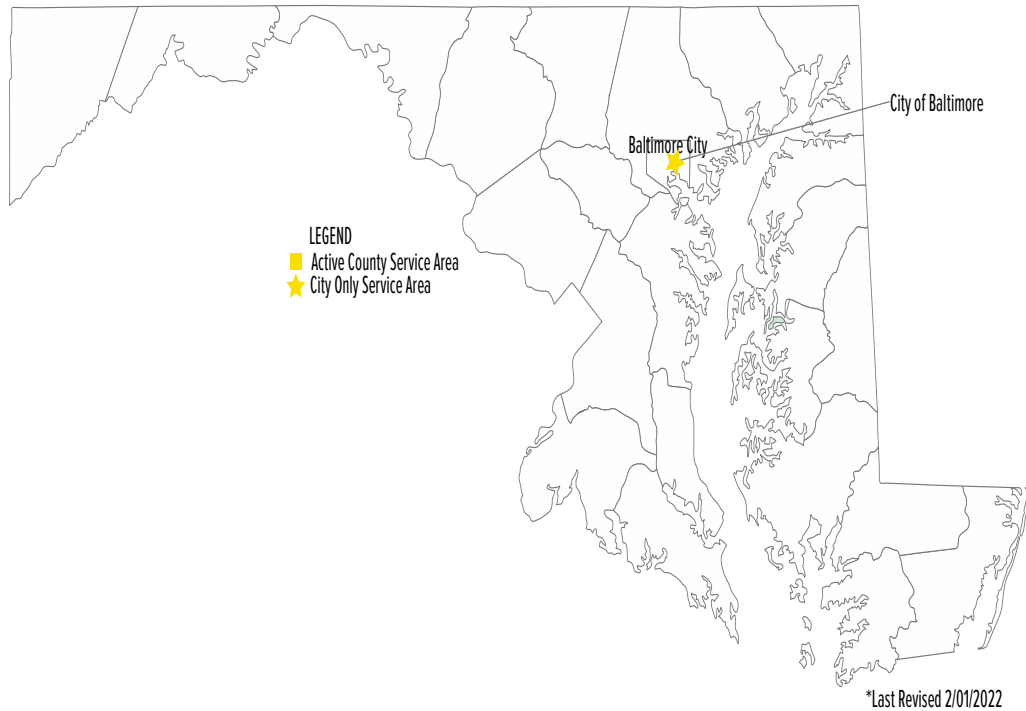
100% BABIES RECEIVED ALL IMMUNIZATIONS BY 24 MONTHS

35% OF CLIENTS 18+ WERE EMPLOYED AT 24 MONTHS



Nurse-Family Partnership Goals

1. Improve pregnancy outcomes by helping women engage in good preventive health practices.
2. Improve child health and development by helping parents provide responsible and competent care; and
3. Improve the economic self-sufficiency of the family by helping parents develop a vision for their own future.



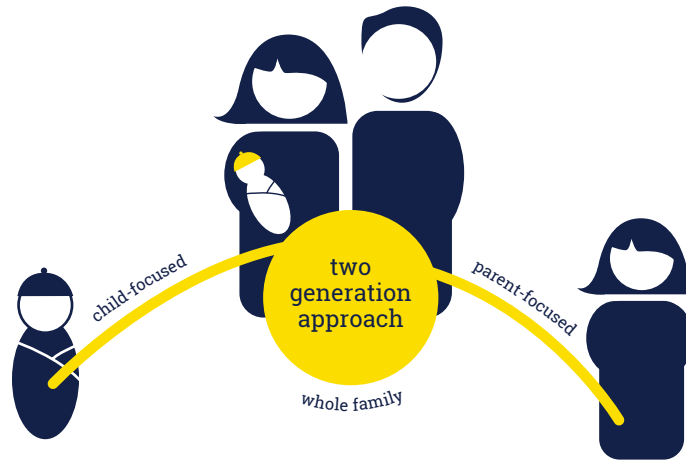
ESTABLISHED: 2012

**FAMILIES SERVED
SINCE 2012: 787**

**CURRENT FUNDED
CAPACITY: 150**

NETWORK PARTNERS

- Baltimore City Health Department



Better Worlds Start with Great Mothers

Nurse-Family Partnership empowers vulnerable first-time moms to transform their lives and create better futures for themselves and their babies.



Jordan Wildermuth

jordan.wildermuth@nursefamilypartnership.org