



ARKANSAS

Nurse-Family Partnership® is an evidence-based, community health program with over 40 years of evidence showing significant improvements in the health and lives of first-time moms and their children living in poverty.

7x \$ RETURN

EVERY \$1 INVESTED IN NFP SAVES \$7.30 IN FUTURE COSTS FOR THE HIGHEST-RISK FAMILIES SERVED¹

Nurse-Family Partnership works by having specially trained nurses regularly visit young, first-time moms-to-be, starting early in the pregnancy, continuing through the child's second birthday. Mothers, babies, families and communities all benefit.



ARKANSAS MOMS

22
Median age at intake

90%
Unmarried at intake

63%
Clients enrolled in Medicaid at intake

*Aggregate data provided by the NSO. Includes state data from 01/01/2019 to 12/31/2021.

Less than or equal to \$6,000
Annual median household income at intake

Race

- 25% White
- 71% Black or African American
- 0% Asian
- 0% American Indian or Alaska Native
- 0% Native Hawaiian or Pacific Islander
- 3% Multi-racial
- 0% Declined

*Aggregate data provided by the NSO. Includes state data from 01/01/2019 to 12/31/2021.

Ethnicity

- 97% Non-Hispanic
- 2% Hispanic
- 0% Declined

OUTCOMES FOR ARKANSAS

*Aggregate data provided by the NSO. Includes state data from 01/01/2019 to 12/31/2021

*Babies born at term are those who reached 37 weeks gestation

80% BABIES BORN AT TERM

56% MOTHERS INITIATED BREASTFEEDING

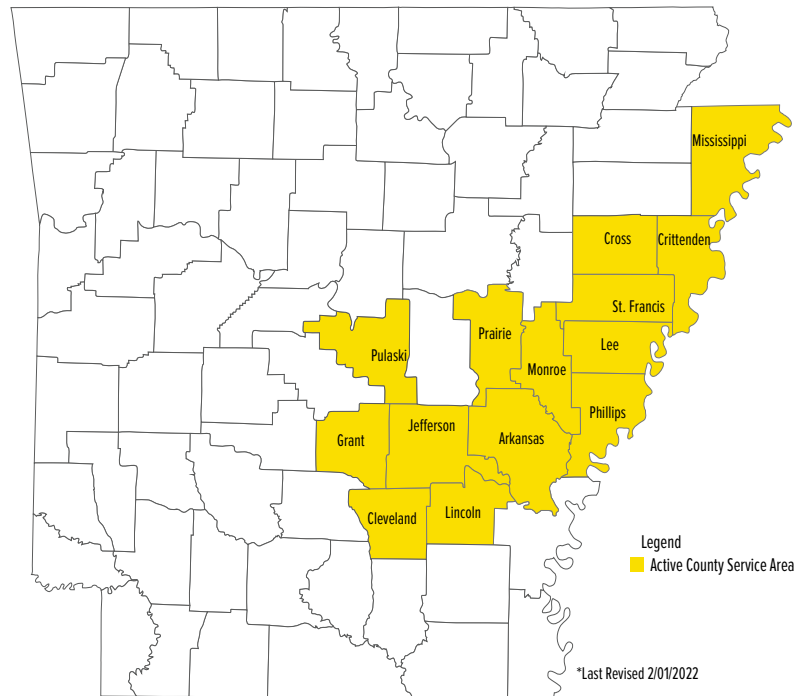
95% BABIES RECEIVED ALL IMMUNIZATIONS BY 24 MONTHS

70% OF CLIENTS 18+ WERE EMPLOYED AT 24 MONTHS



Nurse-Family Partnership Goals

1. Improve pregnancy outcomes by helping women engage in good preventive health practices.
2. Improve child health and development by helping parents provide responsible and competent care; and
3. Improve the economic self-sufficiency of the family by helping parents develop a vision for their own future.



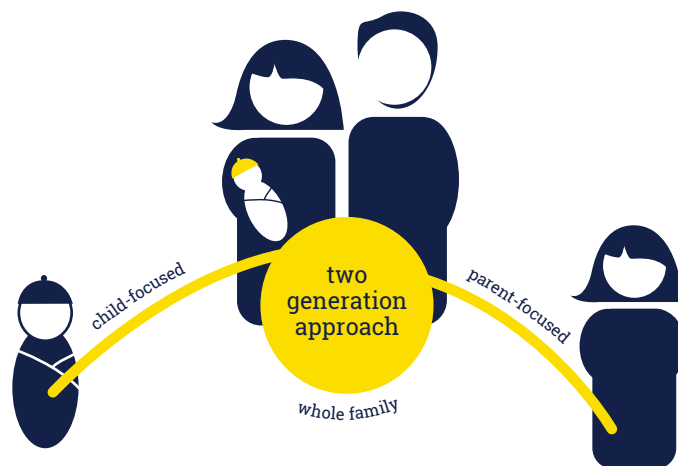
NETWORK PARTNERS

- Arkansas Department of Health

ESTABLISHED: 2011

FAMILIES SERVED IN SINCE 2011: 1,557

CURRENT FUNDED CAPACITY: 275



Lisette Nimmons
303-951-3879

lisette.nimmons@nursefamilypartnership.org

Better Worlds Start with Great Mothers

Nurse-Family Partnership empowers vulnerable first-time moms to transform their lives and create better futures for themselves and their babies.