



MISSOURI

Nurse-Family Partnership® is an evidence-based, community health program with over 40 years of evidence showing significant improvements in the health and lives of first-time moms and their children living in poverty.

6x \$ RETURN

EVERY \$1 INVESTED IN NFP SAVES \$6.00 IN FUTURE COSTS FOR THE HIGHEST-RISK FAMILIES SERVED¹

Nurse-Family Partnership works by having specially trained nurses regularly visit young, first-time moms-to-be, starting early in the pregnancy, continuing through the child's second birthday. Mothers, babies, families and communities all benefit.



MISSOURI MOMS

22
Median age at intake

81%
Unmarried at intake

81%
Clients enrolled in Medicaid at intake

\$6,000-\$9,000
Annual median household income at intake

*Aggregate data provided by the NSO. Includes state data from 01/01/2019 to 12/31/2021

Race

- 39% White
- 46% Black or African American
- 1% Asian
- 1% American Indian or Alaska Native
- 0% Native Hawaiian or Pacific Islander
- 4% Mutli-racial
- 6% Declined

Ethnicity

- 9% Hispanic
- 87% Non-Hispanic
- 0% Declined

*Aggregate data provided by the NSO. Includes state data from 01/01/2019 to 12/31/2021

OUTCOMES FOR MISSOURI

*Aggregate data provided by the NSO. Includes state data from 01/01/2019 to 12/31/2021

*Babies born at term are those who reached 37 weeks gestation

87% BABIES BORN AT TERM

80% MOTHERS INITIATED BREASTFEEDING

87% BABIES RECEIVED ALL IMMUNIZATIONS BY 24 MONTHS

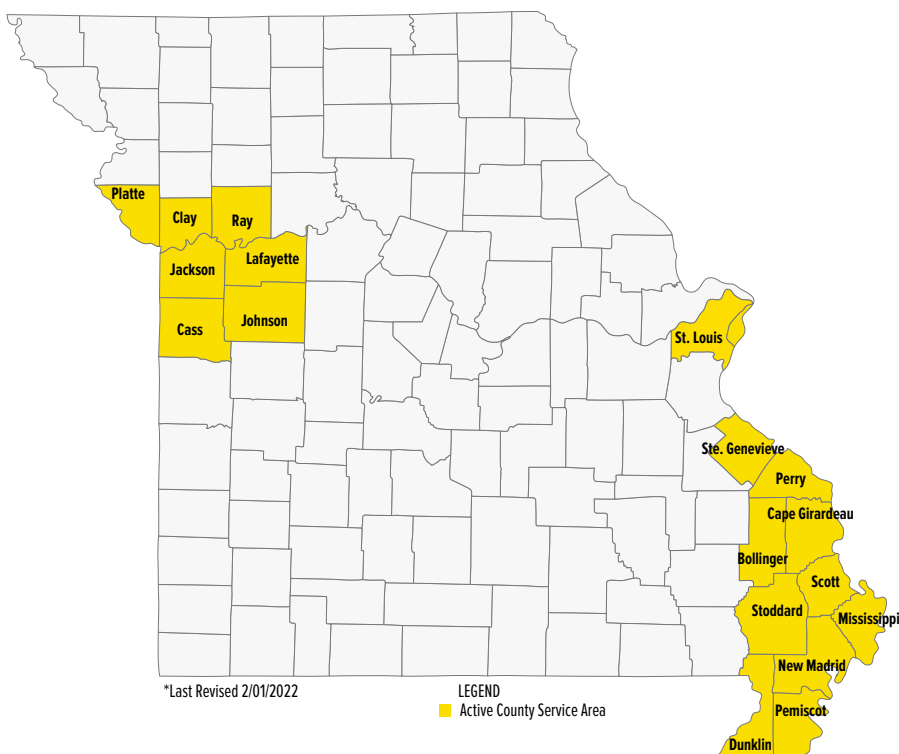
56% OF CLIENTS 18+ WERE EMPLOYED AT 24 MONTHS



MISSOURI

Nurse-Family Partnership Goals

1. Improve pregnancy outcomes by helping women engage in good preventive health practices.
2. Improve child health and development by helping parents provide responsible and competent care; and
3. Improve the economic self-sufficiency of the family by helping parents develop a vision for their own future.



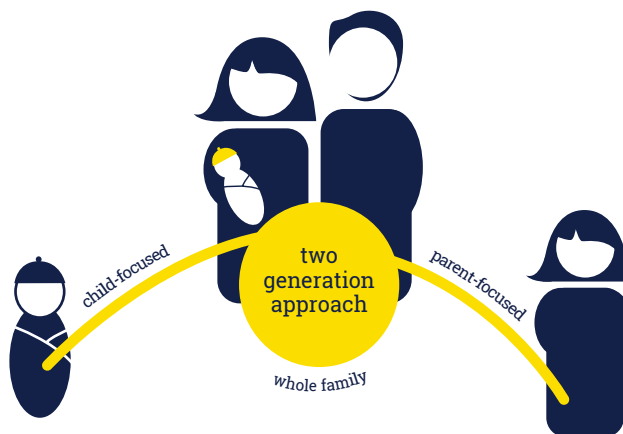
ESTABLISHED: 1999

**FAMILIES SERVED
SINCE 1999: 3,866**

**CURRENT FUNDED
CAPACITY: 450**

NETWORK PARTNERS

- Building Blocks of Missouri-Kansas City Region
- Building Blocks of Missouri-Southeast Region
- Building Blocks of Missouri-St. Louis Region



Better Worlds Start with Great Mothers

Nurse-Family Partnership empowers vulnerable first-time moms to transform their lives and create better futures for themselves and their babies.



Cam Scott

512-573-5356

cam.scott@nursefamilypartnership.org

©2022 Nurse-Family Partnership

1. Miller, Ted R. PhD. Societal Return on Investment in Nurse-Family Partnership Services in Missouri. PIER 2019.