

VIRGINIA



Nurse-Family Partnership® is an evidence-based, community health program with over 40 years of evidence showing significant improvements in the health and lives of first-time moms and their children living in poverty.

5x \$ RETURN

EVERY \$1 INVESTED IN NFP SAVES \$5.40 IN FUTURE COSTS FOR THE HIGHEST-RISK FAMILIES SERVED¹

Nurse-Family Partnership works by having specially trained nurses regularly visit young, first-time moms-to-be, starting early in the pregnancy, continuing through the child's second birthday. Mothers, babies, families and communities all benefit.



VIRGINIA MOMS

22
Median age at intake

84%
Unmarried at intake

48%
Clients enrolled in Medicaid at intake

\$6,000-9,000
Annual median household income at intake

*Aggregate data provided by the NSO. Includes state data from 01/01/2019 to 12/31/2021

Race

- 49% White
- 40% Black or African American
- 1% Asian
- 5% American Indian or Alaska Native
- 0% Native Hawaiian or Pacific Islander
- 3% Multi-racial
- 1% Declined

Ethnicity

- 45% Hispanic
- 54% Non-Hispanic
- 0% Declined

*Aggregate data provided by the NSO. Includes state data from 01/01/2019 to 12/31/2021

OUTCOMES FOR VIRGINIA

*Aggregate data provided by the NSO. Includes state data from 01/01/2019 to 12/31/2021

*Babies born at term are those who reached 37 weeks gestation

88% BABIES BORN AT TERM

82% MOTHERS INITIATED BREASTFEEDING

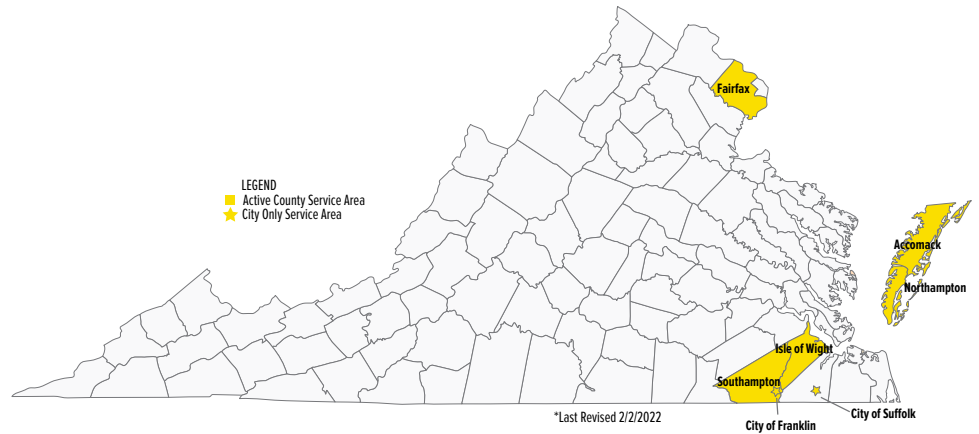
95% BABIES RECEIVED ALL IMMUNIZATIONS BY 24 MONTHS

51% OF CLIENTS 18+ WERE EMPLOYED AT 24 MONTHS



Nurse-Family Partnership Goals

1. Improve pregnancy outcomes by helping women engage in good preventive health practices.
2. Improve child health and development by helping parents provide responsible and competent care; and
3. Improve the economic self-sufficiency of the family by helping parents develop a vision for their own future.



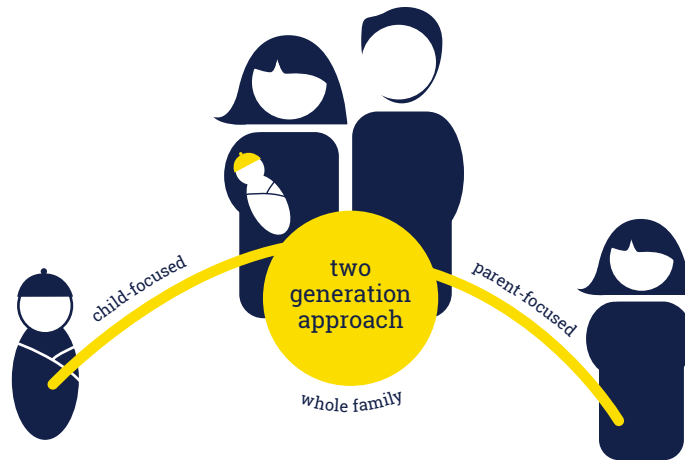
ESTABLISHED: 2012

**FAMILIES SERVED
SINCE 2012: 1,352**

**CURRENT FUNDED
CAPACITY: 375**

NETWORK PARTNERS

- Eastern Shore Health District
- Fairfax County Nurse-Family Partnership
- Western Tidewater Health District



Jessica Lipper
732-956-1259

jessica.lipper@nursefamilypartnership.org

Better Worlds Start with Great Mothers

Nurse-Family Partnership empowers vulnerable first-time moms to transform their lives and create better futures for themselves and their babies.