

# MARYLAND



Nurse-Family Partnership® is an evidence-based, community health program with over 40 years of evidence showing significant improvements in the health and lives of first-time moms and their children living in poverty.

# 6x \$ RETURN

EVERY \$1 INVESTED IN NFP SAVES \$6.60 IN FUTURE COSTS FOR THE HIGHEST-RISK FAMILIES SERVED<sup>1</sup>

Nurse-Family Partnership works by having specially trained nurses regularly visit young, first-time moms-to-be, starting early in the pregnancy, continuing through the child's second birthday. Mothers, babies, families and communities all benefit.



## MARYLAND MOMS

**20**  
Median age at intake

**90%**  
Unmarried at intake

**71%**  
Clients enrolled in Medicaid at intake

**Less than or equal to \$6,000**  
Annual median household income at intake

\*Aggregate data provided by the NSO. Includes state data from 01/01/2019 to 12/31/2021.

## Race

- 9% White
- 79% Black or African American
- 0% Asian
- 1% American Indian or Alaska Native
- 0% Native Hawaiian or Pacific Islander
- 1% Multi-racial
- 6% Declined

\*Aggregate data provided by the NSO. Includes state data from 01/01/2019 to 12/31/2021.

## Ethnicity

- 15% Hispanic
- 78% Non-Hispanic
- 4% Declined

## OUTCOMES FOR MARYLAND

\*Aggregate data provided by the NSO. Includes state data from 01/01/2019 to 12/31/2021

\*Babies born at term are those who reached 37 weeks gestation

**82%** BABIES BORN AT TERM

**73%** MOTHERS INITIATED BREASTFEEDING

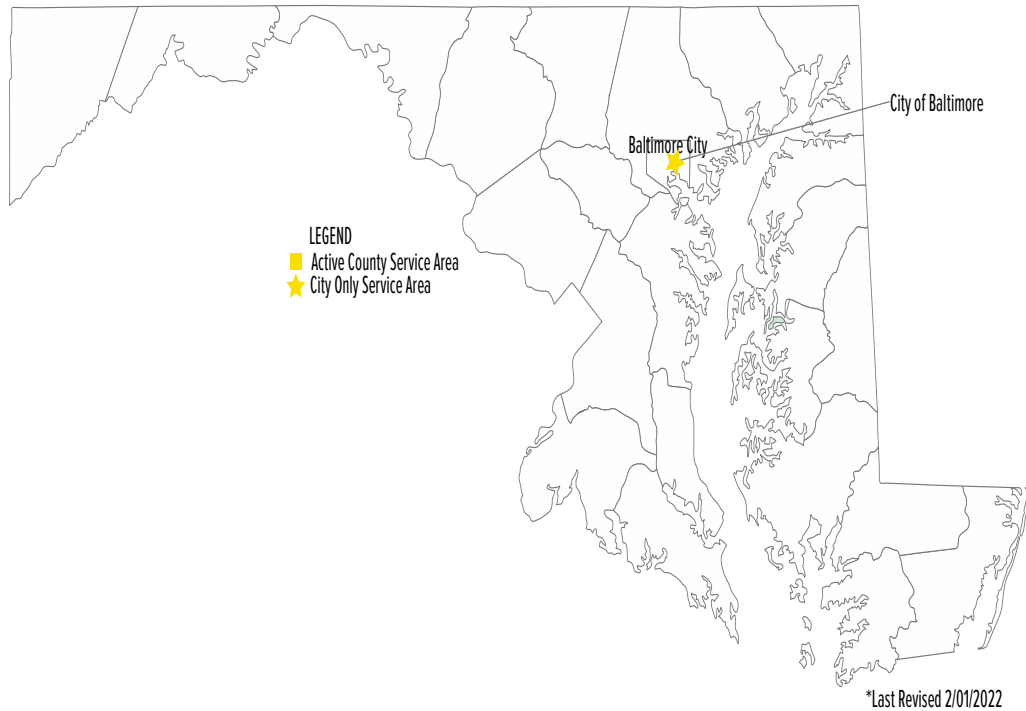
**100%** BABIES RECEIVED ALL IMMUNIZATIONS BY 24 MONTHS

**35%** OF CLIENTS 18+ WERE EMPLOYED AT 24 MONTHS



## Nurse-Family Partnership Goals

1. Improve pregnancy outcomes by helping women engage in good preventive health practices.
2. Improve child health and development by helping parents provide responsible and competent care; and
3. Improve the economic self-sufficiency of the family by helping parents develop a vision for their own future.



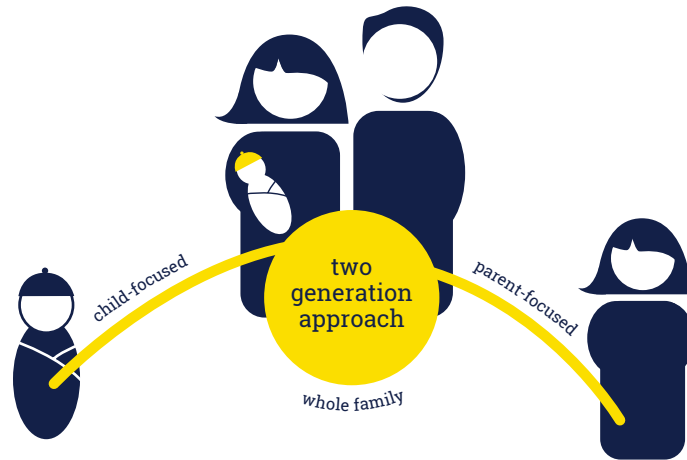
**ESTABLISHED: 2012**

**FAMILIES SERVED  
SINCE 2012: 787**

**CURRENT FUNDED  
CAPACITY: 150**

## NETWORK PARTNERS

- Baltimore City Health Department



## Better Worlds Start with Great Mothers

Nurse-Family Partnership empowers vulnerable first-time moms to transform their lives and create better futures for themselves and their babies.



Jessica Lipper  
732.956.1259

[jessica.lipper@nursefamilypartnership.org](mailto:jessica.lipper@nursefamilypartnership.org)