

# ILLINOIS



Nurse-Family Partnership® is an evidence-based, community health program with over 40 years of evidence showing significant improvements in the health and lives of first-time moms and their children living in poverty.

**6x**  
**\$ RETURN**  
EVERY \$1 INVESTED IN NFP SAVES \$6.60 IN FUTURE COSTS FOR THE HIGHEST-RISK FAMILIES SERVED<sup>1</sup>



Nurse-Family Partnership works by having specially trained nurses regularly visit young, first-time moms-to-be, starting early in the pregnancy, continuing through the child's second birthday. Mothers, babies, families and communities all benefit.



## ILLINOIS MOMS

**24**  
Median age at intake

**75%**  
Unmarried at intake

**78%**  
Clients enrolled in Medicaid at intake

**\$6,000-9,000**  
Annual median household income at intake

\*Aggregate data provided by the NSO. Includes state data from 01/01/2019 to 12/31/2021.

**Race**  
42% White  
45% Black or African American  
1% Asian  
0% American Indian or Alaska Native  
0% Native Hawaiian or Pacific Islander  
6% Multi-racial  
2% Declined

\*Aggregate data provided by the NSO. Includes state data from 01/01/2019 to 12/31/2021.

**Ethnicity**  
15% Hispanic  
80% Non-Hispanic  
1% Declined

## OUTCOMES FOR ILLINOIS

\*Aggregate data provided by the NSO. Includes state data from 01/01/2019 to 12/31/2021

\*Babies born at term are those who reached 37 weeks gestation

**87%** BABIES BORN AT TERM

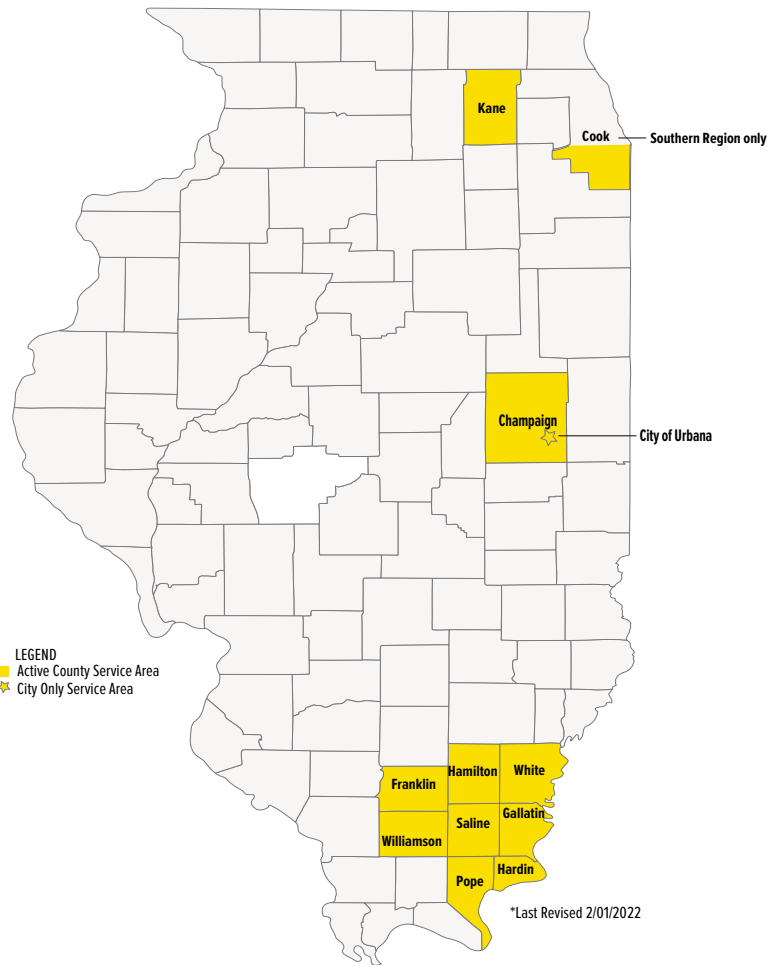
**81%** MOTHERS INITIATED BREASTFEEDING

**85%** BABIES RECEIVED ALL IMMUNIZATIONS BY 24 MONTHS

**52%** OF CLIENTS 18+ WERE EMPLOYED AT 24 MONTHS

## Nurse-Family Partnership Partnership Goals

1. Improve pregnancy outcomes by helping women engage in good preventive health practices.
2. Improve child health and development by helping parents provide responsible and competent care; and
3. Improve the economic self-sufficiency of the family by helping parents develop a vision for their own future.



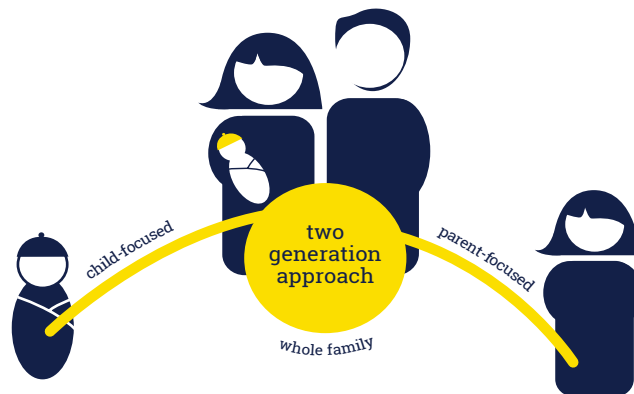
**ESTABLISHED: 2000**

**FAMILIES SERVED  
SINCE 2000: 3,634**

**CURRENT FUNDED  
CAPACITY: 488**

## NETWORK PARTNERS

- Egyptian Health Department
- Kane Kares
- Carle Healthy Beginnings
- Metropolitan Family Services



## Better Worlds Start with Great Mothers

Nurse-Family Partnership empowers vulnerable first-time moms to transform their lives and create better futures for themselves and their babies.



Jordan Wildermuth  
224.605.1793

[jordan.wildermuth@nursefamilypartnership.org](mailto:jordan.wildermuth@nursefamilypartnership.org)