

# CONNECTICUT



Nurse-Family Partnership® is an evidence-based, community health program with over 40 years of evidence showing significant improvements in the health and lives of first-time moms and their children living in poverty.

**7x**  
**\$ RETURN**  
EVERY \$1 INVESTED IN NFP SAVES \$7.10 IN FUTURE COSTS FOR THE HIGHEST-RISK FAMILIES SERVED<sup>1</sup>

Nurse-Family Partnership works by having specially trained nurses regularly visit young, first-time moms-to-be, starting early in the pregnancy, continuing through the child's second birthday. Mothers, babies, families and communities all benefit.



## CONNECTICUT MOMS

**24**

Median age at intake

**79%**

Unmarried at intake

**78%**

Clients enrolled in Medicaid at intake

**\$6,000 - \$9,000**

Annual median household income at intake

\*Aggregate data provided by the NSO. Includes state data from 01/01/2019 to 12/31/2021.

## Race

52% White  
19% Black or African American  
1% Asian  
0% American Indian or Alaska Native  
0% Native Hawaiian or Pacific Islander  
13% Multi-racial  
13% Declined

## Ethnicity

38% Hispanic  
58% Non-Hispanic  
3% Declined

\*Aggregate data provided by the NSO. Includes state data from 01/01/2019 to 12/31/2021.

## OUTCOMES FOR CONNECTICUT

\*Aggregate data provided by the NSO. Includes state data from 01/01/2019 to 12/31/2021

\*Babies born at term are those who reached 37 weeks gestation

**90%** BABIES BORN AT TERM

**86%** MOTHERS INITIATED BREASTFEEDING

**91%** BABIES RECEIVED ALL IMMUNIZATIONS BY 24 MONTHS

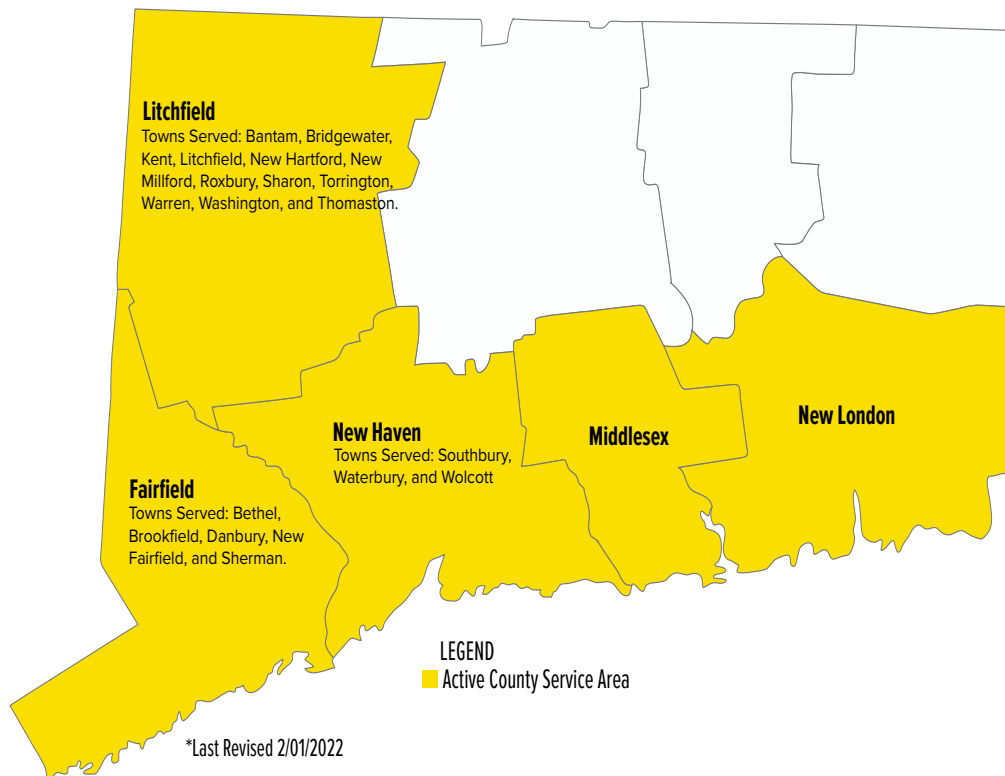
**57%** OF CLIENTS 18+ WERE EMPLOYED AT 24 MONTHS



# CONNECTICUT

## Nurse-Family Partnership Goals

1. Improve pregnancy outcomes by helping women engage in good preventive health practices.
2. Improve child health and development by helping parents provide responsible and competent care; and
3. Improve the economic self-sufficiency of the family by helping parents develop a vision for their own future.



**ESTABLISHED: 2012**

**FAMILIES SERVED  
SINCE 2012: 508**

**CURRENT FUNDED  
CAPACITY: 150**

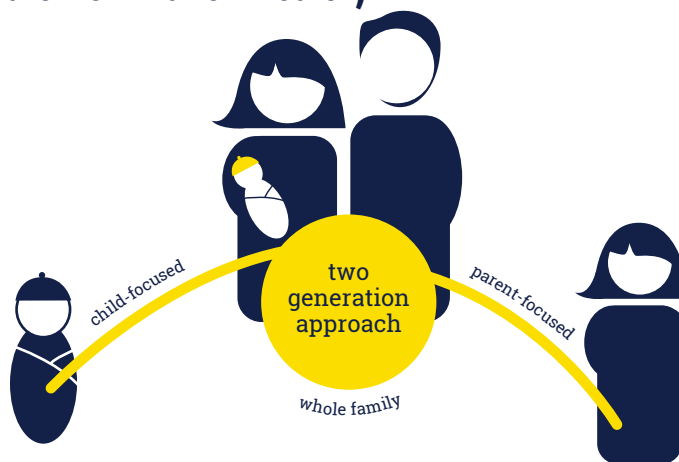


Emily Frankel  
718.736.4275

[emily.frankel@nursefamilypartnership.org](mailto:emily.frankel@nursefamilypartnership.org)

## NETWORK PARTNERS

- RVNA Health
- Visiting Nurse Association of Southeastern Connecticut (Yale New Haven Health)



## Better Worlds Start with Great Mothers

Nurse-Family Partnership empowers vulnerable first-time moms to transform their lives and create better futures for themselves and their babies.