

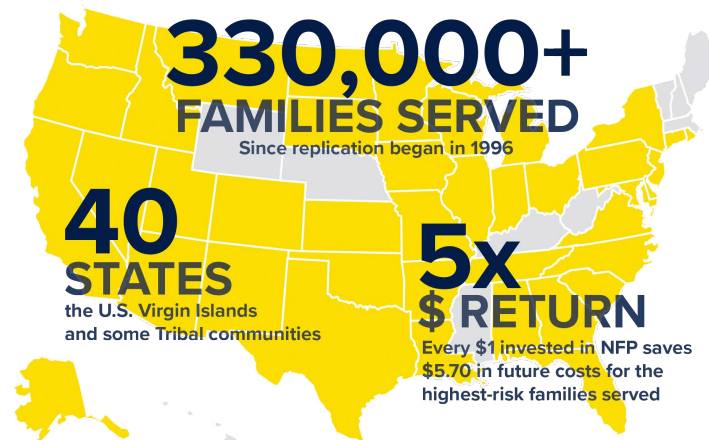
## 2020 NATIONAL PUBLIC POLICY PRIORITIES

### PROGRAM OVERVIEW

**Nurse-Family Partnership® (NFP)** is an evidence-based, community health program that helps transform the lives of babies born to first-time mothers facing a range of challenges to breaking the cycle of intergenerational poverty.

Every year, 380,000 children are born to first-time mothers living below the federal poverty level in the United States<sup>1</sup>. For a number of reasons, families enrolled in NFP face significant challenges to leading healthy lives and overcoming adversity. NFP addresses these challenges by partnering mothers with a registered nurse at a pivotal moment — beginning early in pregnancy with a first child — and providing ongoing nurse home visits that continue through the child’s second birthday.

Across the nation, governments at all levels increasingly recognize the value of investing limited taxpayer dollars in evidence-based programs that reliably improve outcomes for families — and NFP is an example of evidence-based practice and policy in action. NFP is among the most proven and widely replicated programs during this critical maternal and early childhood period that has dramatic and lasting impacts on the health and well-being of vulnerable families. Independent research proves that communities also benefit from this relationship — every dollar invested in Nurse-Family Partnership can yield more than five dollars in return for the highest risk families<sup>2</sup>.



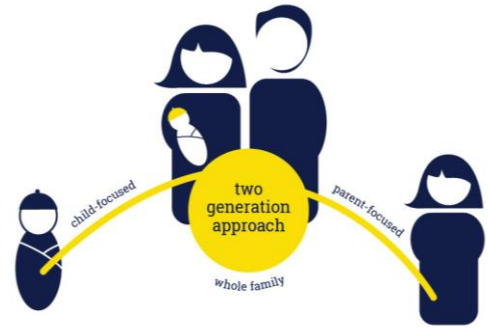
Supported with private and public funds at the federal, state and local levels, NFP currently enrolls over 40,000 moms across 40 states, many tribal organizations and one territory, which translates to 50,000 families served annually and more than 330,000 families served cumulatively to date. We work in a bipartisan manner to improve the health and well-being of mothers and advance solutions that promote economic mobility for their families.

<sup>1</sup> US Census Bureau, American Community Survey (2014). Kids Count Data Center Website: <http://datacenter.kidscount.org>.

<sup>2</sup> Early Childhood Interventions, Proven Results, Future Promise, Karoly, Kilburn, Cannon, 2005.

## IMPROVE, PROTECT AND EXPAND FUNDING STREAMS FOR NFP

NFP's proven track record of transforming the life trajectory of families in poverty is supported by governments at every level. This public funding is critical and provides the majority of funding for NFP's local network partners. We work to protect, expand and better utilize these funding streams, which include the Maternal, Infant, and Early Childhood Home Visiting (MIECHV) program, Medicaid, Maternal and Child Health Block Grant, child welfare funding, and state and local general funds.



## IMPROVE NFP'S COVERAGE WITHIN MEDICAID AND THE HEALTH CARE SYSTEM

NFP provides preventive health care services to mothers and babies at a critical point in their lives and the majority of families are Medicaid-eligible. As both a health care and social service program, NFP promotes coordination with the health care system to ensure mothers and babies get the best care possible. We seek comprehensive payment from Medicaid and other health care payers and promote coordinated referral processes from state agencies, managed care organizations and other providers to offer NFP to as many families as possible.

## ADDRESS MATERNAL MORTALITY AND SUPPORT HEALTHY AND STABLE FAMILIES

NFP knows that healthy, strong mothers mean healthy, strong babies and children. Our mothers face a range of adversities, and NFP supports a variety of efforts to help them and their children thrive. Reducing maternal and infant mortality, supporting families suffering from substance abuse and mental health challenges, and making advancements in paid leave and child-care for families are important policy priorities for NFP. We also support opportunities for continuous quality improvement and implementation of the NFP model nationwide, including nursing practice and retention. Taken together, these policies provide an important foundation of success for the families and communities we serve.

## PROMOTE INNOVATIVE POLICIES THAT SUPPORT PROGRAMS THAT WORK

As a leading evidence-based program, NFP supports the adoption of evidence-based policies and the advancement of government investments in what works. We actively seek opportunities to support and promote the use of evidence in policymaking and have strongly supported efforts at all levels of government to integrate better evidentiary practice into funding decisions. In addition, NFP is a leader in the use of Pay for Success (PFS) funding to expand access to effective programs. NFP currently implements the only PFS project in the United States to focus on maternal and child health outcomes, which expands NFP throughout the state of South Carolina.



**For questions or more information** about Nurse-Family Partnership, please contact our Policy & Government Affairs Team at [pga@nursefamilypartnership.org](mailto:pga@nursefamilypartnership.org)