



ARKANSAS

Nurse-Family Partnership® is an evidence-based, community health program with over 40 years of evidence showing significant improvements in the health and lives of first-time moms and their children living in poverty.

7x
\$ RETURN
EVERY \$1 INVESTED IN NFP SAVES \$7.30 IN FUTURE COSTS FOR THE HIGHEST-RISK FAMILIES SERVED¹

Nurse-Family Partnership works by having specially trained nurses regularly visit young, first-time moms-to-be, starting early in the pregnancy, continuing through the child's second birthday. Mothers, babies, families and communities all benefit.



ARKANSAS MOMS

21
Median age at intake

89%
Unmarried at intake

64%
Clients enrolled in Medicaid at intake

Less than or equal to \$6,000
Annual median household income at intake

*Aggregate data provided by NSO, includes data for the state from Jan 1st, 2019 to Nov 30th, 2019

Race

- 22% White
- 75% Black or African American
- 2% Multi-racial
- 0% Declined
- 0% Asian
- <1% Native Hawaiian or Pacific Islander
- 0% American Indian or Alaska Native

*Aggregate data provided by NSO, includes data for the state from Jan 1st, 2019 to Nov 30th, 2019

Ethnicity

- 99% Non-Hispanic
- 1% Hispanic
- 0% Declined

OUTCOMES FOR ARKANSAS

* Aggregate data provided by NSO, includes data for the state from Jan 1st, 2019 to Nov 30th, 2019

80% BABIES BORN FULL TERM

66% MOTHERS INITIATED BREASTFEEDING

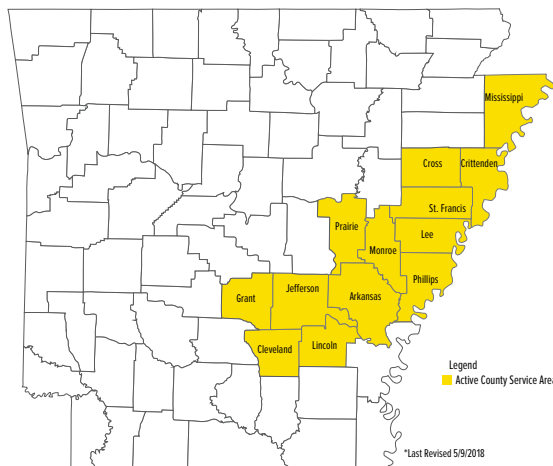
91% BABIES RECEIVED ALL IMMUNIZATIONS BY 24 MONTHS

65% OF CLIENTS 18+ WERE EMPLOYED AT 24 MONTHS



Nurse-Family Partnership Goals

1. Improve pregnancy outcomes by helping women engage in good preventive health practices.
2. Improve child health and development by helping parents provide responsible and competent care; and
3. Improve the economic self-sufficiency of the family by helping parents develop a vision for their own future.



Proven Results

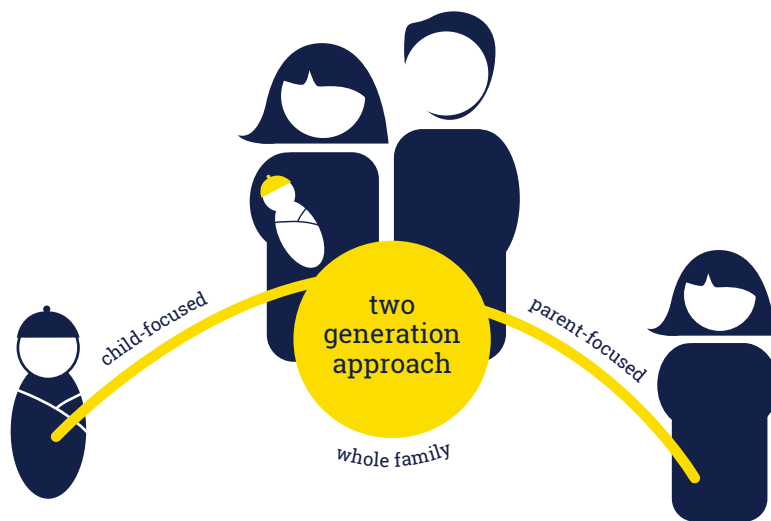
The Nurse-Family Partnership program has been independently reviewed and evaluated, and is ranked as the Gold Standard of home visiting programs. A report from the Center on the Developing Child at Harvard University shows the extent to which very early childhood experiences influence later learning, behavior and health.

ESTABLISHED: 2011

FAMILIES SERVED: 1,251

NETWORK PARTNERS: 1

COUNTIES CURRENTLY SERVED: 13



Jaime Fuquay
919.500.3069

Jaime.Fuquay@nursefamilypartnership.org

1900 Grant Street, 4th Floor
Denver, Colorado 80203
NurseFamilyPartnership.org

©2020 Nurse-Family Partnership

“ ”

THERE IS A MAGIC WINDOW DURING PREGNANCY... A TIME WHEN THE DESIRE TO BE A GOOD MOTHER AND RAISE A HEALTHY, HAPPY CHILD CREATES MOTIVATION TO OVERCOME INCREDIBLE OBSTACLES INCLUDING POVERTY WITH THE HELP OF A WELL-TRAINED NURSE.

— DAVID OLDS, PH.D., NURSE-FAMILY PARTNERSHIP'S FOUNDER
PROFESSOR OF PEDIATRICS AT UNIVERSITY OF COLORADO