

Nurse-Family Partnership VIRGINIA



Nurse-Family Partnership® is an evidence-based, community health program with over 45 years of evidence showing significant improvements in the health and lives of first-time moms and their children living in poverty.

5x \$ RETURN

EVERY \$1 INVESTED IN
NFP SAVES \$5.40 IN
FUTURE COSTS FOR THE
HIGHEST-RISK FAMILIES
SERVED¹

Nurse-Family Partnership works by having specially trained nurses regularly visit young, first-time moms-to-be, starting early in the pregnancy, continuing through the child's second birthday. Mothers, babies, families and communities all benefit.



VIRGINIA MOMS

22

Median age at intake

89%

Unmarried at intake

81%

Clients enrolled in Medicaid at intake

\$9,000-\$12,000

Annual median household income at intake

*Aggregate data provided by the NSO. Includes state data from 01/01/2022 to 07/07/2023.

Race

62% White
31% Black or African American
0% Asian
0% American Indian or Alaska Native
0% Native Hawaiian or Pacific Islander
1% Multi-racial
1% Declined

Ethnicity

56% Hispanic
42% Non-Hispanic
0% Declined

*Aggregate data provided by the NSO. Includes state data from 01/01/2022 to 07/07/2023.

OUTCOMES FOR VIRGINIA

*Aggregate data provided by the NSO. Includes state data from 01/01/2022 to 12/12/2023

*Babies born at term are those who reached 37 weeks gestation

89% BABIES BORN AT TERM

88% MOTHERS INITIATED BREASTFEEDING

96% BABIES RECEIVED ALL IMMUNIZATIONS BY 24 MONTHS

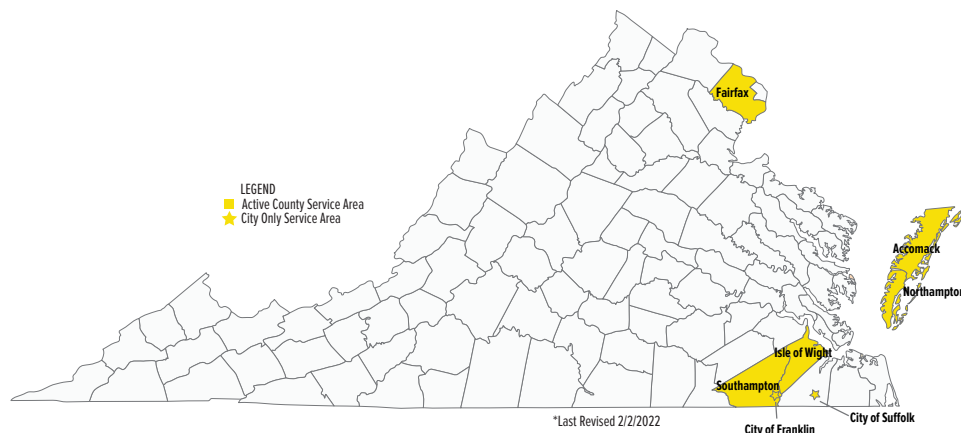
57% OF CLIENTS 18+ WERE EMPLOYED AT 24 MONTHS



Nurse-Family

Partnership Goals

1. Improve pregnancy outcomes by helping women engage in good preventive health practices.
2. Improve child health and development by helping parents provide responsible and competent care; and
3. Improve the economic self-sufficiency of the family by helping parents develop a vision for their own future.



ESTABLISHED: 2012

**FAMILIES SERVED
SINCE 2012: 1,352**

**CURRENT FUNDED
CAPACITY: 375**

NETWORK PARTNERS

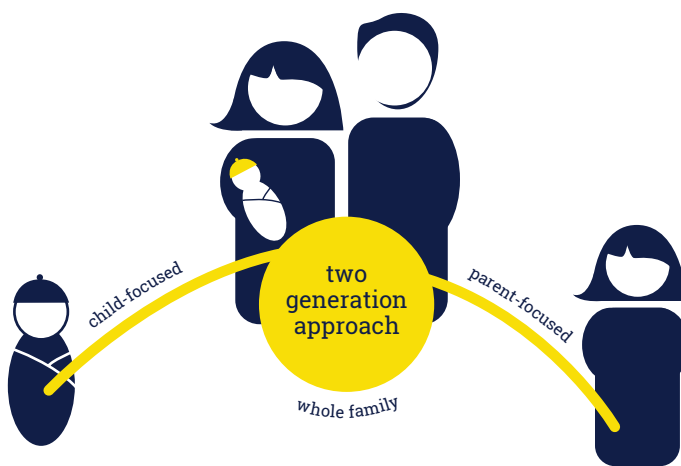
- Eastern Shore Health District
- Fairfax County Nurse-Family Partnership
- Western Tidewater Health District



Lisette Nimmons

303.951.3879

lisette.nimmons@nursefamilypartnership.org



Better Worlds Start with Great Mothers

Nurse-Family Partnership empowers vulnerable first-time moms to transform their lives and create better futures for themselves and their babies.