



SOUTH DAKOTA

Nurse-Family Partnership® is an evidence-based, community health program with over 45 years of evidence showing significant improvements in the health and lives of first-time moms and their children living in poverty.

9x \$ RETURN

EVERY \$1 INVESTED IN NFP SAVES \$9.40 IN FUTURE COSTS FOR THE HIGHEST-RISK FAMILIES SERVED¹

Nurse-Family Partnership works by having specially trained nurses regularly visit young, first-time moms-to-be, starting early in the pregnancy, continuing through the child's second birthday. Mothers, babies, families and communities all benefit.



SOUTH DAKOTA MOMS

23
Median age at intake

81%
Unmarried at intake

65%
Clients enrolled in Medicaid at intake

\$6,000-\$9,000
Annual median household income at intake

*Aggregate data provided by the NSO. Includes state data from 01/01/2022 to 07/07/2023.

Race
62% White
1% Black or African American
1% Asian
21% American Indian or Alaska Native
0% Native Hawaiian or Pacific Islander
1% Multi-racial
1% Declined

Ethnicity
23% Hispanic
76% Non-Hispanic
1% Declined

*Aggregate data provided by the NSO. Includes state data from 01/01/2022 to 07/07/2023.

OUTCOMES FOR SOUTH DAKOTA

*Aggregate data provided by the NSO. Includes state data from 01/01/2022 to 12/12/2023.

*Babies born at term are those who reached 37 weeks gestation

87% BABIES BORN AT TERM

88% MOTHERS INITIATED BREASTFEEDING

93% BABIES RECEIVED ALL IMMUNIZATIONS BY 24 MONTHS

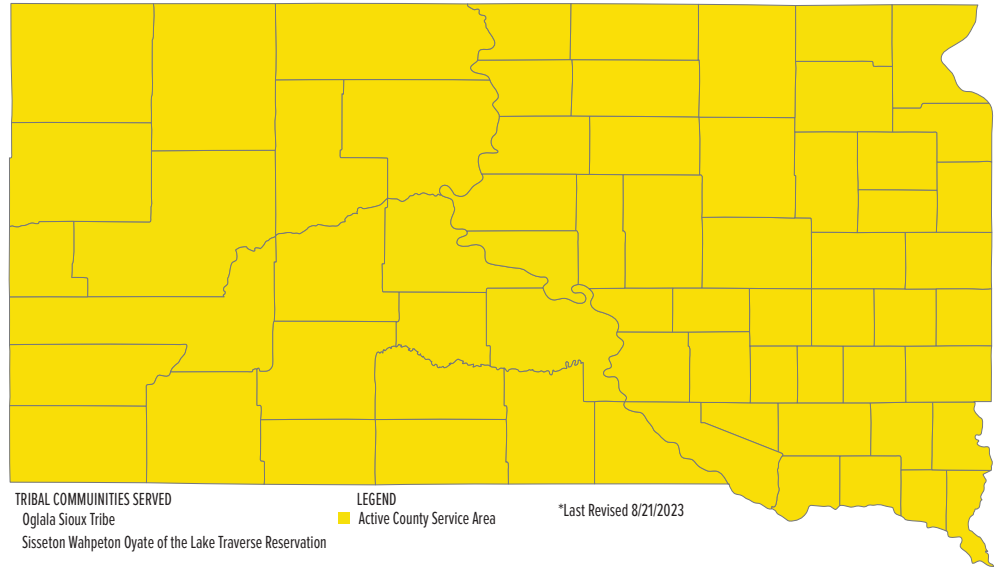
59% OF CLIENTS 18+ WERE EMPLOYED AT 24 MONTHS



Nurse-Family

Partnership Goals

1. Improve pregnancy outcomes by helping women engage in good preventive health practices.
2. Improve child health and development by helping parents provide responsible and competent care; and
3. Improve the economic self-sufficiency of the family by helping parents develop a vision for their own future.



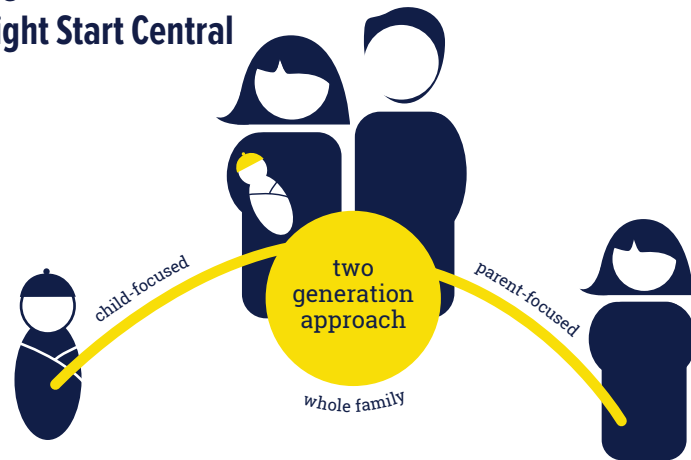
ESTABLISHED: 2000

**FAMILIES SERVED
SINCE 2000: 3,113**

**CURRENT FUNDED
CAPACITY: 702**

NETWORK PARTNERS

- Children's Home Society of South Dakota
- South Dakota State Health Department
- SD Bright Start West
- SD Bright Start East
- SD Bright Start Central



Megan Adamczewski
(219) 983-2624

megan.adamczewski@nursefamilypartnership.org

Better Worlds Start with Great Mothers

Nurse-Family Partnership empowers vulnerable first-time moms to transform their lives and create better futures for themselves and their babies.