

NEVADA



Nurse-Family Partnership® is an evidence-based, community health program with over 45 years of evidence showing significant improvements in the health and lives of first-time moms and their children living in poverty.

4x \$ RETURN

EVERY \$1 INVESTED IN NFP SAVES \$4.30 IN FUTURE COSTS FOR THE HIGHEST-RISK FAMILIES SERVED¹

Nurse-Family Partnership works by having specially trained nurses regularly visit young, first-time moms-to-be, starting early in the pregnancy, continuing through the child's second birthday. Mothers, babies, families and communities all benefit.



NEVADA MOMS

23
Median age at intake

88%
Unmarried at intake

48%
Clients enrolled in Medicaid at intake

Less than or equal to \$6,000
Annual median household income at intake

*Aggregate data provided by the NSO. Includes state data from 01/01/2022 to 7/7/2023.

Race
0% White
84% Black or African American
0% Asian
0% American Indian or Alaska Native
0% Native Hawaiian or Pacific Islander
1% Multi-racial
1% Declined

Ethnicity
1% Hispanic
88% Non-Hispanic
2% Declined

*Aggregate data provided by the NSO. Includes state data from 01/01/2022 to 7/7/2023.

OUTCOMES FOR NEVADA

*Aggregate data provided by the NSO. Includes state data from 01/01/2022 to 12/12/2023.

*Babies born at term are those who reached 37 weeks gestation

90% BABIES BORN AT TERM

95% MOTHERS INITIATED BREASTFEEDING

100% BABIES RECEIVED ALL IMMUNIZATIONS BY 24 MONTHS

46% OF CLIENTS 18+ WERE EMPLOYED AT 24 MONTHS



Nurse-Family Partnership Goals

1. Improve pregnancy outcomes by helping women engage in good preventive health practices.
2. Improve child health and development by helping parents provide responsible and competent care; and
3. Improve the economic self-sufficiency of the family by helping parents develop a vision for their own future.

ESTABLISHED: 2008

**FAMILIES SERVED
SINCE 2008: 1,554**

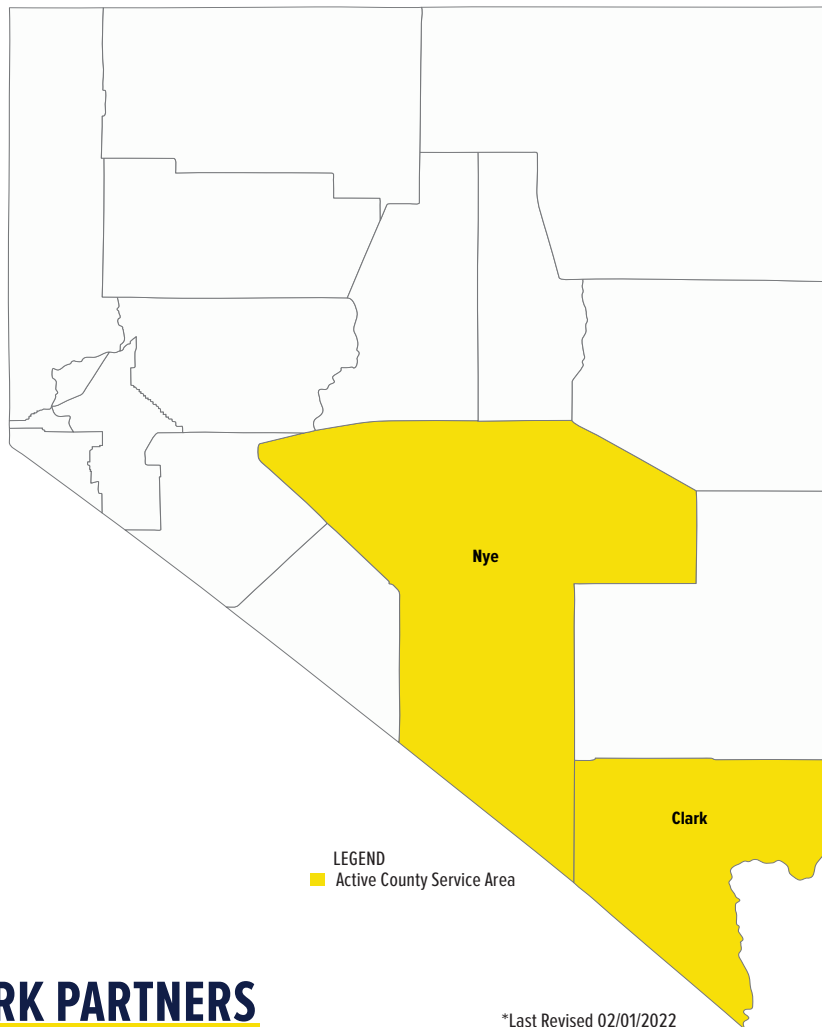
**CURRENT FUNDED
CAPACITY: 275**



Matthew Richardson
(360) 764-0991

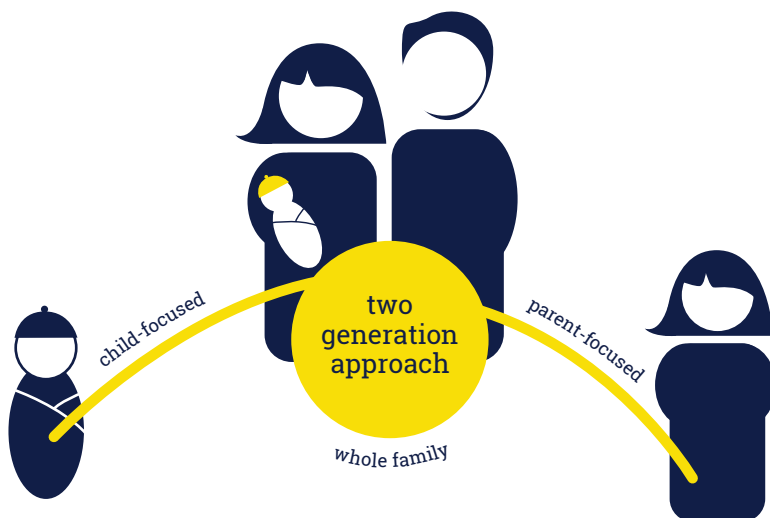
matthew.richardson@nursefamilypartnership.org

©2022 Nurse-Family Partnership



NETWORK PARTNERS

- Southern Nevada Health District



1. Miller, Ted R. PhD. Societal Return on Investment in Nurse-Family Partnership Services in Nevada. PIER 2019.