

MARYLAND



Nurse-Family Partnership®

is an evidence-based, community health program with over 45 years of evidence showing significant improvements in the health and lives

6x \$ RETURN

EVERY \$1 INVESTED IN NFP SAVES \$6.60 IN FUTURE COSTS FOR THE HIGHEST-RISK FAMILIES SERVED¹

Nurse-Family Partnership works by having specially trained nurses regularly visit young, first-time moms-to-be, starting early in the pregnancy, continuing through the child's second birthday. Mothers, babies, families and communities all benefit.



MARYLAND MOMS

20

Median age at intake

83%

Unmarried at intake

61%

Clients enrolled in Medicaid at intake

Less than or equal to \$6,000
Annual median household income at intake

*Aggregate data provided by the NSO. Includes state data from 01/01/2022 to 07/07/2023.

Race

1% White
77% Black or African American
0% Asian
1% American Indian or Alaska Native
0% Native Hawaiian or Pacific Islander
1% Multi-racial
1% Declined

Ethnicity

18% Hispanic
79% Non-Hispanic
0% Declined

*Aggregate data provided by the NSO. Includes state data from 01/01/2022 to 07/07/2023.

OUTCOMES FOR MARYLAND

*Aggregate data provided by the NSO. Includes state data from 01/01/2022 to 12/12/2023.

*Babies born at term are those who reached 37 weeks gestation

87% BABIES BORN AT TERM

81% MOTHERS INITIATED BREASTFEEDING

57% BABIES RECEIVED ALL IMMUNIZATIONS BY 24 MONTHS

63% OF CLIENTS 18+ WERE EMPLOYED AT 24 MONTHS



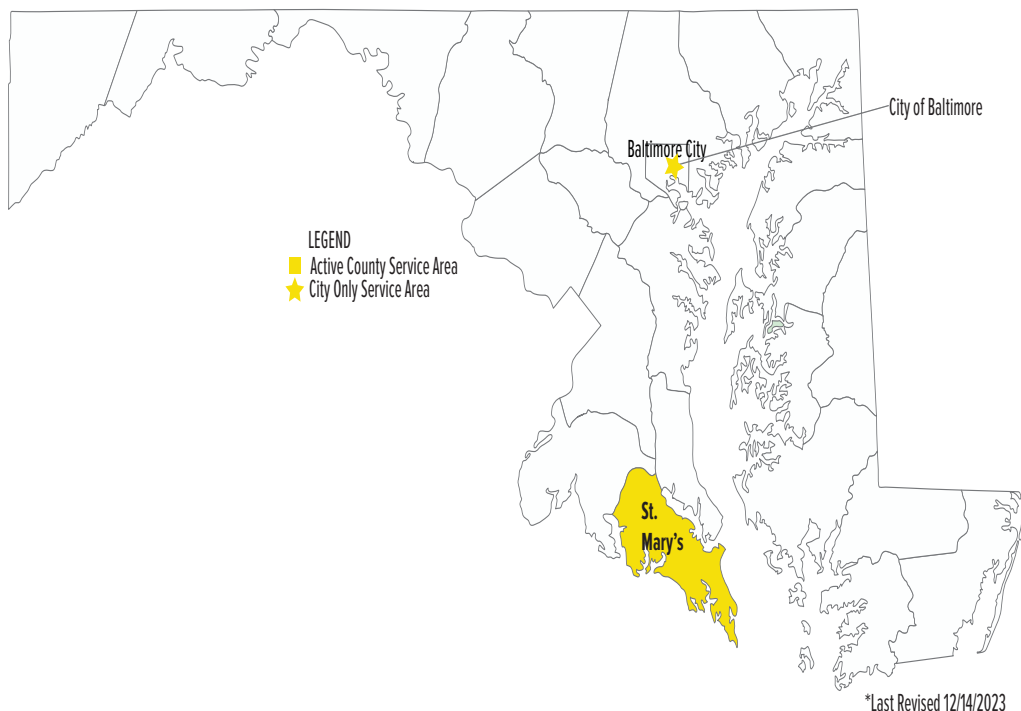
Nurse-Family Partnership Goals

1. Improve pregnancy outcomes by helping women engage in good preventive health practices.
2. Improve child health and development by helping parents provide responsible and competent care; and
3. Improve the economic self-sufficiency of the family by helping parents develop a vision for their own future.

ESTABLISHED: 2012

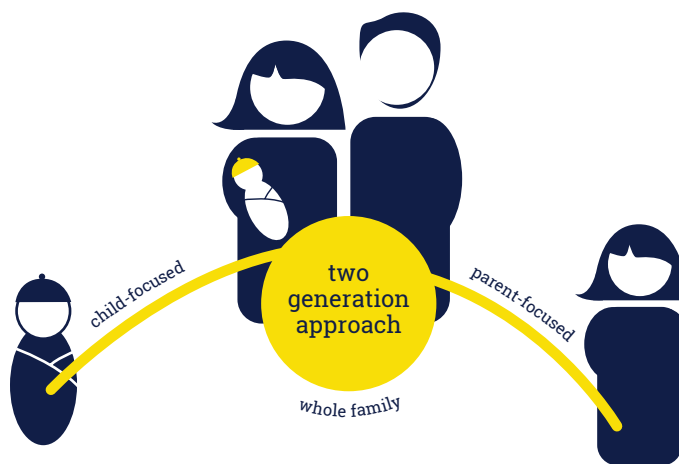
**FAMILIES SERVED
SINCE 2012: 869**

**CURRENT FUNDED
CAPACITY: 200**



NETWORK PARTNERS

- Baltimore City Health Department
- NFP of St. Mary's County



Better Worlds Start with Great Mothers

Nurse-Family Partnership empowers vulnerable first-time moms to transform their lives and create better futures for themselves and their babies.



Cam Scott

(512) 573-5356

cam.scott@nursefamilypartnership.org