

LOUISIANA



Nurse-Family Partnership® is an evidence-based, community health program with over 45 years of evidence showing significant improvements in the health and lives of first-time moms and their children living in poverty.

6x
\$ RETURN
EVERY \$1 INVESTED IN NFP SAVES \$6.30 IN FUTURE COSTS FOR THE HIGHEST-RISK FAMILIES SERVED¹

Nurse-Family Partnership works by having specially trained nurses regularly visit young, first-time moms-to-be, starting early in the pregnancy, continuing through the child's second birthday. Mothers, babies, families and communities all benefit.



LOUISIANA MOMS

23

Median age at intake

87%

Unmarried at intake

92%

Clients enrolled in Medicaid at intake

Less than or equal to \$6,000
Annual median household income at intake

*Aggregate data provided by the NSO. Includes state data from 01/01/2022 to 07/07/2023.

Race

40% White
51% Black or African American
1% Asian
1% American Indian or Alaska Native
0% Native Hawaiian or Pacific Islander
1% Multi-racial
1% Declined

Ethnicity

1% Hispanic
90% Non-Hispanic
1% Declined

*Aggregate data provided by the NSO. Includes state data from 01/01/2022 to 07/07/2023.

OUTCOMES FOR LOUISIANA

*Aggregate data provided by the NSO. Includes state data from 01/01/2022 to 12/12/2023.

*Babies born at term are those who reached 37 weeks gestation

86% BABIES BORN AT TERM

74% MOTHERS INITIATED BREASTFEEDING

88% BABIES RECEIVED ALL IMMUNIZATIONS BY 24 MONTHS

61% OF CLIENTS 18+ WERE EMPLOYED AT 24 MONTHS



LOUISIANA

Nurse-Family Partnership Goals

1. Improve pregnancy outcomes by helping women engage in good preventive health practices.
2. Improve child health and development by helping parents provide responsible and competent care; and
3. Improve the economic self-sufficiency of the family by helping parents develop a vision for their own future.

ESTABLISHED: 1999

**FAMILIES SERVED
SINCE 1999: 25,364**

**CURRENT FUNDED
CAPACITY: 2,300**



NETWORK PARTNERS

- Louisiana Bureau of Family Health

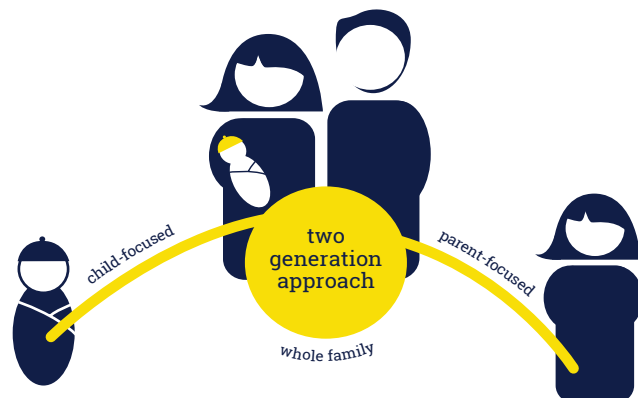


Lisette Nimmons

303.951.3879

lisette.nimmons@nursefamilypartnership.org

©2023 Nurse-Family Partnership



1. Miller, Ted R. PhD. Societal Return on Investment in Nurse-Family Partnership Services in Louisiana. PIRE 2019.