

IDAHO



Nurse-Family Partnership® is an evidence-based, community health program with over 45 years of evidence showing significant improvements in the health and lives of first-time moms and their children living in poverty.

6x
\$ RETURN
EVERY \$1 INVESTED IN NFP SAVES \$6.40 IN FUTURE COSTS FOR THE HIGHEST-RISK FAMILIES SERVED¹

Nurse-Family Partnership works by having specially trained nurses regularly visit young, first-time moms-to-be, starting early in the pregnancy, continuing through the child's second birthday. Mothers, babies, families and communities all benefit.



IDAHO MOMS

21
Median age at intake

82%
Unmarried at intake

66%
Clients enrolled in Medicaid at intake

\$9,000-\$12,000
Annual median household income at intake

*Aggregate data provided by the NSO. Includes state data from 01/01/2022 to 07/07/2023.

Race

- 82% White
- 1% Black or African American
- 1% Asian
- 1% American Indian or Alaska Native
- 1% Native Hawaiian or Pacific Islander
- 1% Declined
- 1% Multi-racial

*Aggregate data provided by the NSO. Includes state data from 01/01/2022 to 07/07/2023.

Ethnicity

- 31% Hispanic
- 65% Non-Hispanic
- 1% Declined

OUTCOMES FOR IDAHO

*Aggregate data provided by the NSO. Includes state data from 01/01/2022 to 12/12/2023.

*Babies born at term are those who reached 37 weeks gestation

86% BABIES BORN AT TERM

95% MOTHERS INITIATED BREASTFEEDING

80% BABIES RECEIVED ALL IMMUNIZATIONS BY 24 MONTHS

71% OF CLIENTS 18+ WERE EMPLOYED AT 24 MONTHS



Nurse-Family Partnership Goals

1. Improve pregnancy outcomes by helping women engage in good preventive health practices.
2. Improve child health and development by helping parents provide responsible and competent care; and
3. Improve the economic self-sufficiency of the family by helping parents develop a vision for their own future.

ESTABLISHED: 2012

FAMILIES SERVED SINCE 2012: 1,083

CURRENT FUNDED CAPACITY: 243

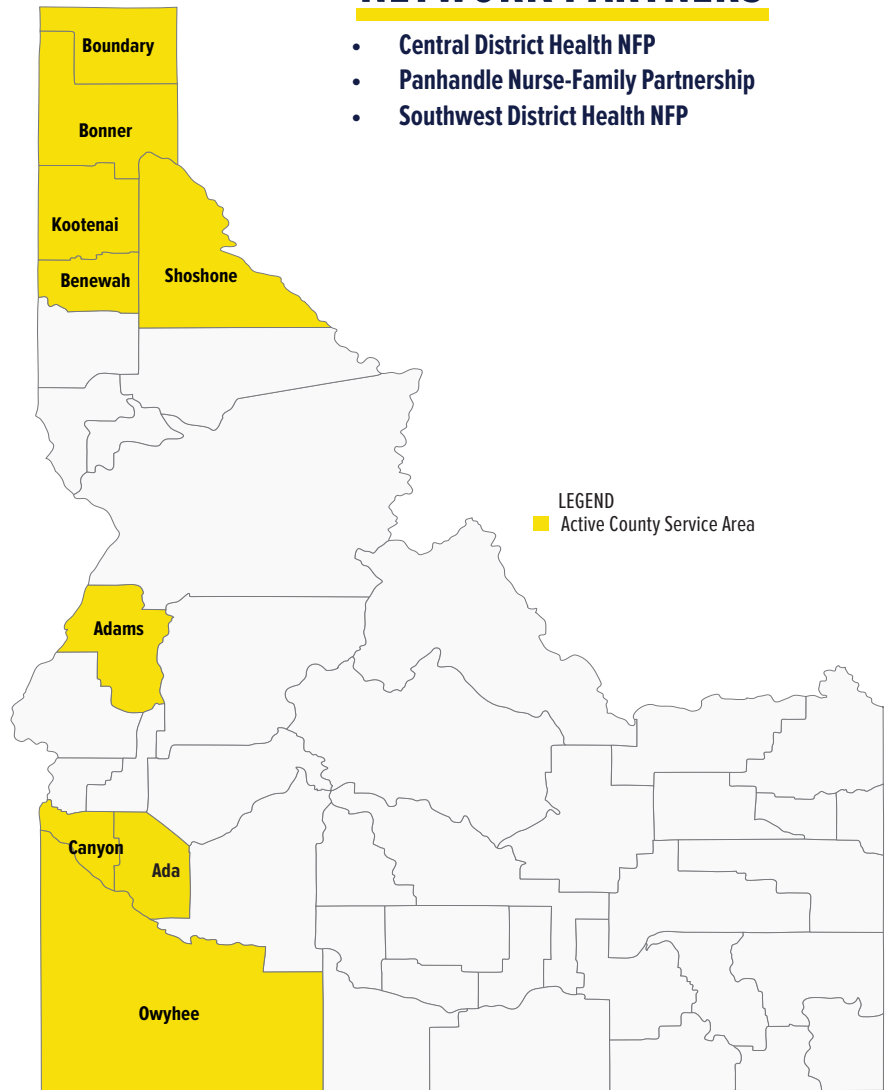


Matthew Richardson
360.764.0991

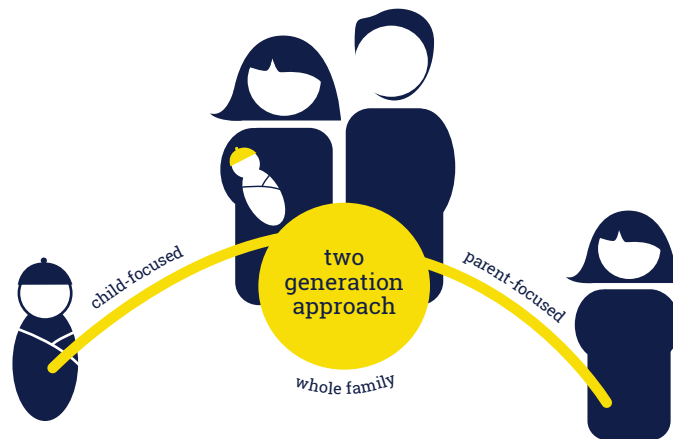
matthew.richardson@nursefamilypartnership.org

NETWORK PARTNERS

- Central District Health NFP
- Panhandle Nurse-Family Partnership
- Southwest District Health NFP



*Last Revised 8/24/2023



Better Worlds Start with Great Mothers

Nurse-Family Partnership empowers vulnerable first-time moms to transform their lives and create better futures for themselves and their babies.