

# Nurse-Family Partnership GEORGIA



Nurse-Family Partnership® is an evidence-based, community health program with over 45 years of evidence showing significant improvements in the health and lives of first-time moms and their children living in poverty.

**6x**  
**\$ RETURN**  
EVERY \$1 INVESTED IN  
NFP SAVES \$6.60 IN  
FUTURE COSTS FOR THE  
HIGHEST-RISK FAMILIES  
SERVED<sup>1</sup>

Nurse-Family Partnership works by having specially trained nurses regularly visit young, first-time moms-to-be, starting early in the pregnancy, continuing through the child's second birthday. Mothers, babies, families and communities all benefit.



## GEORGIA MOMS

**23**

Median age at intake

**94%**

Unmarried at intake

**88%**

Clients enrolled in Medicaid at intake

**\$6,000-\$9,000**

Annual median household income at intake

\*Aggregate data provided by the NSO. Includes state data from 01/01/2022 to 07/07/2023.

## Race

16% White  
77% Black or African American  
0% Asian  
0% American Indian or Alaska Native  
1% Native Hawaiian or Pacific Islander  
1% Multi-racial  
1% Declined

## Ethnicity

1% Hispanic  
95% Non-Hispanic  
0% Declined

\*Aggregate data provided by the NSO. Includes state data from 01/01/2022 to 07/07/2023.

## OUTCOMES FOR GEORGIA

\*Aggregate data provided by the NSO. Includes state data from 01/01/2022 to 12/12/2023.

\*Babies born at term are those who reached 37 weeks gestation

**94%** BABIES BORN AT TERM

**84%** MOTHERS INITIATED BREASTFEEDING

**92%** BABIES RECEIVED ALL IMMUNIZATIONS BY 24 MONTHS

**68%** OF CLIENTS 18+ WERE EMPLOYED AT 24 MONTHS



# GEORGIA

## Nurse-Family Partnership Goals

1. Improve pregnancy outcomes by helping women engage in good preventive health practices.
2. Improve child health and development by helping parents provide responsible and competent care; and
3. Improve the economic self-sufficiency of the family by helping parents develop a vision for their own future.

**ESTABLISHED: 2012**

**FAMILIES SERVED  
SINCE 2012: 952**

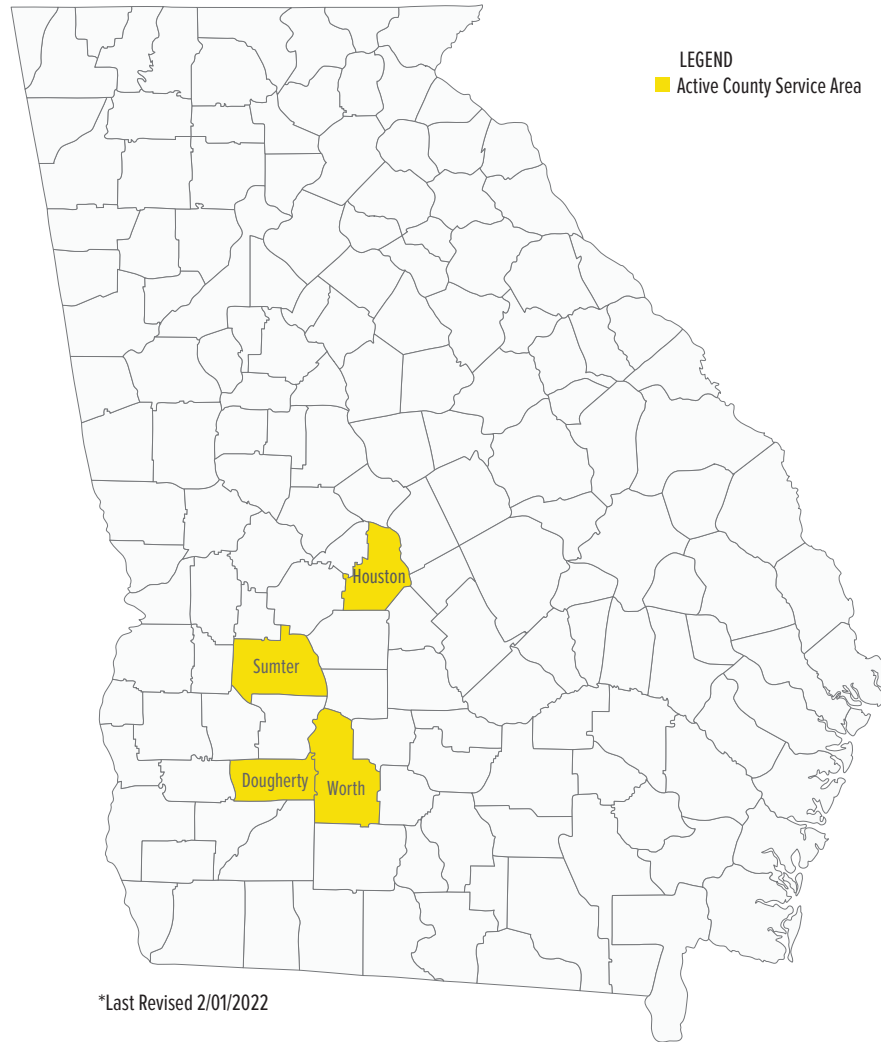
**CURRENT FUNDED  
CAPACITY: 175**



Lisette Nimmons  
303.951.3879

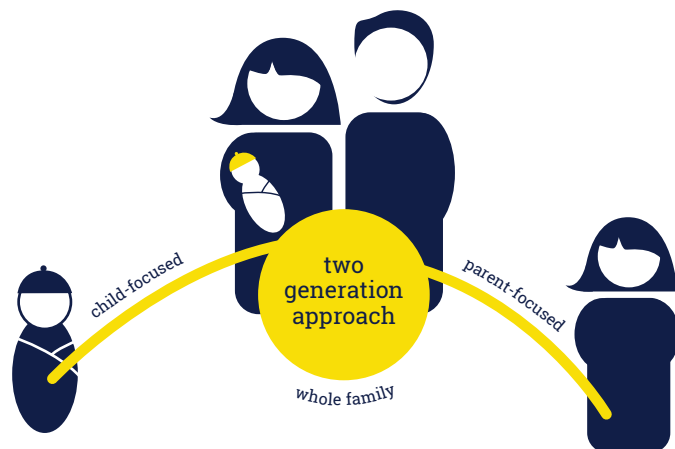
[lisette.nimmons@nursefamilypartnership.org](mailto:lisette.nimmons@nursefamilypartnership.org)

©2023 Nurse-Family Partnership



## NETWORK PARTNERS

- Phoebe Putney Memorial Hospital
- Houston County Health Department



## Better Worlds Start with Great Mothers

Nurse-Family Partnership empowers vulnerable first-time moms to transform their lives and create better futures for themselves and their babies.