

GEORGIA



Nurse-Family Partnership® is an evidence-based, community health program with over 40 years of evidence showing significant improvements in the health and lives of first-time moms and their children living in poverty.

6x \$ RETURN

EVERY \$1 INVESTED IN NFP SAVES \$6.60 IN FUTURE COSTS FOR THE HIGHEST-RISK FAMILIES SERVED¹

Nurse-Family Partnership works by having specially trained nurses regularly visit young, first-time moms-to-be, starting early in the pregnancy, continuing through the child's second birthday. Mothers, babies, families and communities all benefit.



GEORGIA MOMS

22
Median age at intake

89%
Unmarried at intake

82%
Clients enrolled in Medicaid at intake

\$12,000-\$16,000
Annual median household income at intake

*Aggregate data provided by the NSO. Includes state data from 01/01/2019 to 12/30/2021.

Race

- 21% White
- 69% Black or African American
- 0% Asian
- 3% American Indian or Alaska Native
- 0% Native Hawaiian or Pacific Islander
- 4% Multi-racial
- 2% Declined

Ethnicity

- 9% Hispanic
- 90% Non-Hispanic
- 1% Declined

*Aggregate data provided by the NSO. Includes state data from 01/01/2019 to 12/30/2021.

OUTCOMES FOR GEORGIA

*Aggregate data provided by the NSO. Includes state data from 01/01/2019 to 12/31/2021

*Babies born at term are those who reached 37 weeks gestation

94% BABIES BORN AT TERM

84% MOTHERS INITIATED BREASTFEEDING

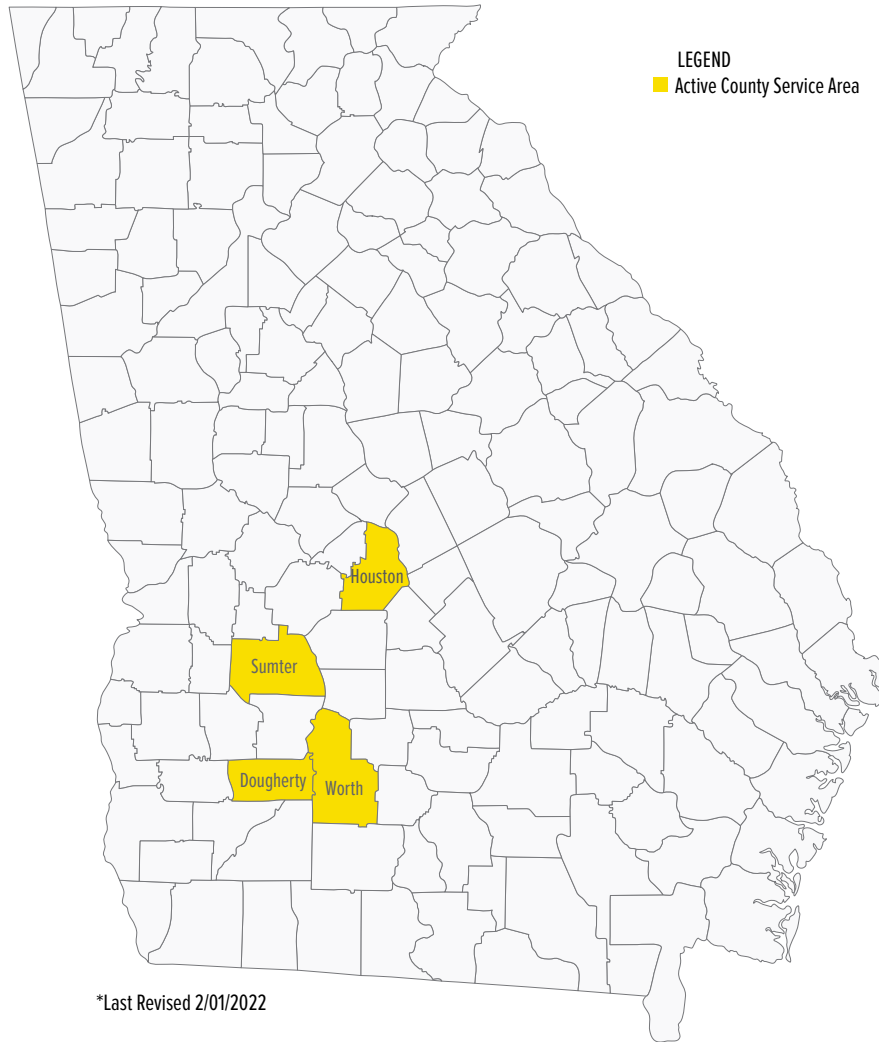
92% BABIES RECEIVED ALL IMMUNIZATIONS BY 24 MONTHS

68% OF CLIENTS 18+ WERE EMPLOYED AT 24 MONTHS



Nurse-Family Partnership Goals

1. Improve pregnancy outcomes by helping women engage in good preventive health practices.
2. Improve child health and development by helping parents provide responsible and competent care; and
3. Improve the economic self-sufficiency of the family by helping parents develop a vision for their own future.



*Last Revised 2/01/2022

ESTABLISHED: 2012

FAMILIES SERVED SINCE 2012: 823

ANNUAL FUNDED CAPACITY: 175

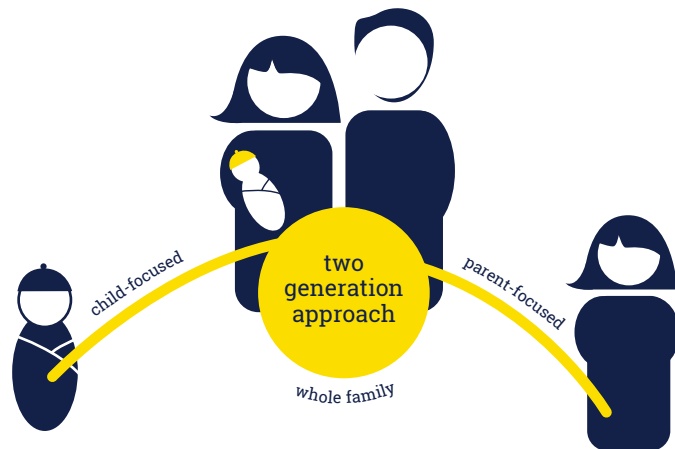


Lisette Nimmons
303-951-3879

lisette.nimmons@nursefamilypartnership.org

NETWORK PARTNERS

- Phoebe Putney Memorial Hospital
- Houston County Health Department



Better Worlds Start with Great Mothers

Nurse-Family Partnership empowers vulnerable first-time moms to transform their lives and create better futures for themselves and their babies.