



# ARKANSAS

Nurse-Family Partnership® is an evidence-based, community health program with over 40 years of evidence showing significant improvements in the health and lives of first-time moms and their children living in poverty.

**7x**  
**\$ RETURN**  
EVERY \$1 INVESTED IN NFP SAVES \$7.30 IN FUTURE COSTS FOR THE HIGHEST-RISK FAMILIES SERVED<sup>1</sup>

Nurse-Family Partnership works by having specially trained nurses regularly visit young, first-time moms-to-be, starting early in the pregnancy, continuing through the child's second birthday. Mothers, babies, families and communities all benefit.



## ARKANSAS MOMS

**22**  
Median age at intake

**90%**  
Unmarried at intake

**63%**  
Clients enrolled in Medicaid at intake

\*Aggregate data provided by the NSO. Includes state data from 01/01/2019 to 12/31/2021.

**Less than or equal to \$6,000**  
Annual median household income at intake

\*Aggregate data provided by the NSO. Includes state data from 01/01/2019 to 12/31/2021.

**Race**  
25% White  
71% Black or African American  
1% Asian  
1% American Indian or Alaska Native  
1% Native Hawaiian or Pacific Islander  
3% Multi-racial  
1% Declined

**Ethnicity**  
97% Non-Hispanic  
2% Hispanic  
1% Declined

## OUTCOMES FOR ARKANSAS

\*Aggregate data provided by the NSO. Includes state data from 01/01/2019 to 12/31/2021

\*Babies born at term are those who reached 37 weeks gestation

**80%** BABIES BORN AT TERM

**56%** MOTHERS INITIATED BREASTFEEDING

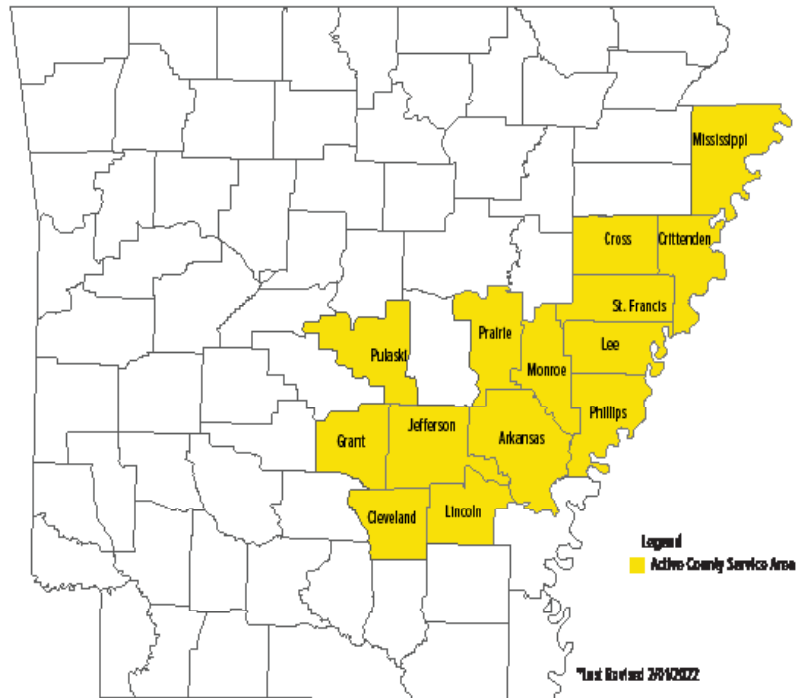
**95%** BABIES RECEIVED ALL IMMUNIZATIONS BY 24 MONTHS

**70%** OF CLIENTS 18+ WERE EMPLOYED AT 24 MONTHS



## Nurse-Family Partnership Goals

1. Improve pregnancy outcomes by helping women engage in good preventive health practices.
2. Improve child health and development by helping parents provide responsible and competent care; and
3. Improve the economic self-sufficiency of the family by helping parents develop a vision for their own future.



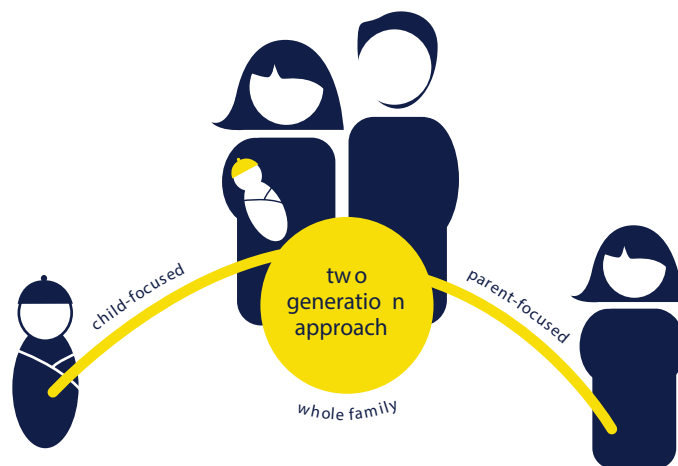
**ESTABLISHED: 2011**

**FAMILIES SERVED IN SINCE 2011: 1,557**

**CURRENT FUNDED CAPACITY: 275**

## NETWORK PARTNERS

- Arkansas Department of Health



Brittany McAllister  
737.210.1053

[brittany.mcallister@nursefamilypartnership.org](mailto:brittany.mcallister@nursefamilypartnership.org)

## Better Worlds Start with Great Mothers

Nurse-Family Partnership empowers vulnerable first-time moms to transform their lives and create better futures for themselves and their babies.