

Nurse-Family Partnership ARKANSAS



Nurse-Family Partnership® is an evidence-based, community health program with over 45 years of evidence showing significant improvements in the health and lives of first-time moms and their children living in poverty.

7x
\$ RETURN
EVERY \$1 INVESTED IN
NFP SAVES \$7.30 IN
FUTURE COSTS FOR THE
HIGHEST-RISK FAMILIES
SERVED¹

Nurse-Family Partnership works by having specially trained nurses regularly visit young, first-time moms-to-be, starting early in the pregnancy, continuing through the child's second birthday. Mothers, babies, families and communities all benefit.



ALASKA MOMS

24

Median age at intake

73%

Unmarried at intake

55%

Clients enrolled in Medicaid at intake

\$12,000-\$16,000

Annual median household income at intake

*Aggregate data provided by the NSO. Includes state data from 01/01/2022 to 07/07/2023.

Race

40% White
1% Black or African American
11% Asian
14% American Indian or Alaska Native
1% Native Hawaiian or Pacific Islander
11% Multi-racial
1% Declined

Ethnicity

15% Hispanic
81% Non-Hispanic
1% Declined

*Aggregate data provided by the NSO. Includes state data from 01/01/2022 to 07/07/2023.

OUTCOMES FOR ARKANSAS

*Aggregate data provided by the NSO. Includes state data from 01/01/2022 to 12/12/2023.

*Babies born at term are those who reached 37 weeks gestation

91% BABIES BORN AT TERM

63% MOTHERS INITIATED BREASTFEEDING

82% BABIES RECEIVED ALL IMMUNIZATIONS BY 24 MONTHS

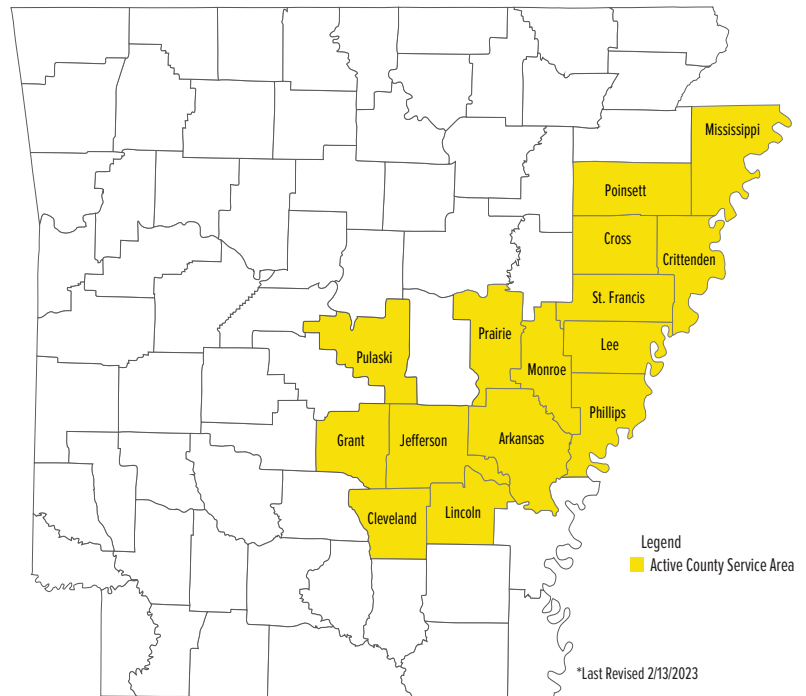
64% OF CLIENTS 18+ WERE EMPLOYED AT 24 MONTHS



ARKANSAS

Nurse-Family Partnership Goals

1. Improve pregnancy outcomes by helping women engage in good preventive health practices.
2. Improve child health and development by helping parents provide responsible and competent care; and
3. Improve the economic self-sufficiency of the family by helping parents develop a vision for their own future.



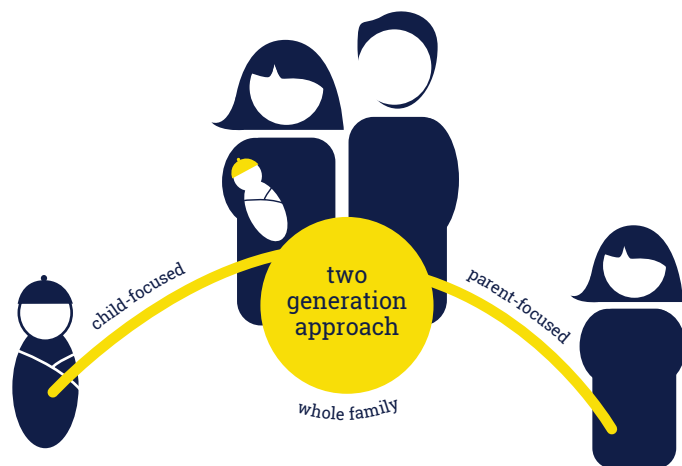
NETWORK

- Arkansas Department of Health

ESTABLISHED: 2011

FAMILIES SERVED IN
SINCE 2011: 1,557

CURRENT FUNDED
CAPACITY: 275



Lisette Nimmons

303.951.3879

lisette.nimmons@nursefamilypartnership.org

Better Worlds Start with Great Mothers

Nurse-Family Partnership empowers vulnerable first-time moms to transform their lives and create better futures for themselves and their babies.